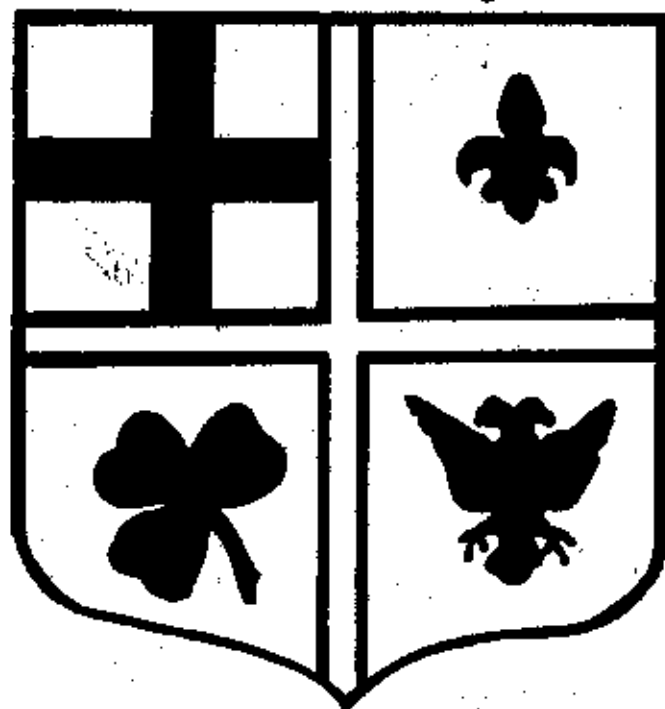


U h e a k i k i



**A QUARTERLY PUBLICATION
OF KANKAKEE VALLEY
GENEALOGICAL SOCIETY**

QUARTERLY PUBLICATION

Kankakee Valley Genealogical Society
 c/o Kankakee Public Library
 304 S. Indiana Ave.
 Kankakee, Illinois 60901

May, 1990

Vol. 20 No. 2

TABLE OF CONTENTS

	<u>Page</u>
1856 Kankakee County Marriage Records	2-5
Great & Great, Greats	5
Grigsby Family Reunion	5
Orphan Train Heritage Society of America	5-6
The Chicago Historical Society Library	6-9
Kankakee County Grave Markers	9-10
St. Rose Cemetery Markers	11-12
Books in Genealogical Room, Kankakee Public Library	13-15
Kankakee County Court - 1876	15-17
Kankakee County Histories - 1876	18
The Assessment - 1876	18-19
1917 Prairie Farmer's Directory of Kankakee County	20-24
Ancestor Charts	25-28
Surname Index	29-30

1856 KANKAKEE COUNTY MARRIAGE RECORDS

HUSBAND	WIFE	DATE	BOOK	PAGE
Sherwin, Michael M.	Potter, Aurora H.	Jan 1 56	A	12
Reynolds, David	Blakesley, Ellen	Jan 1 56	A	13
Dugay, Toussaint	Grandmont, Theresa	Jan 1 56	A	13
Raynor, John	Snyder Louisa	Jan 2 56	A	13
Starkey, Jackson	Wells, Ann Eliza	Jan 2 56	A	13
Adam, Francis	Mircott?, Matilda	Jan 2 56	A	12
Amiot, Jeachin	Sondralrulett?, Philomene	Jan 5 56	A	13
Grigani, Jullen?	Boudreau, Omile?	Jan 6 56	A	13
Smedley, George	Thompson, Margaret	Jan 10 56	A	13
Labrie, Joseph D.	Cemonno?, Salina	Jan 13 56	A	13
Janno?, Abus	Bean, Caroline	Jan 14 56	A	13
Reninlo?, Stephen	Dumond, Angel	Jan 15 56	A	13
McGuffy, Ebenezer	Hanson, Nancy	Jan 15 56	A	13
Jones W. L.	Canada, Hester Ann	Jan 17 56	A	13
Bacon, Philip	Barnett, Alvissa	Jan 17 56	A	13
Lesage, Isemiah	Bennett, Roseila	Jan 17 56	A	13
Lapolis, Jean B.	Hebert, Sophia Delvana	Jan 21 56	A	13
Thompson, Samuel	Wright, Isophena	Jan 23 56	A	13
Barcelow, Honoratus	Belanger, Elmisio	Jan 28 56	A	13
Smith, Narcepis	Hebert, Delima	Jan 29 56	A	13
Conhaun, James	Norton, Mary	Jan 29 56	A	13
Jones, Wm. G.	Farmer, Margaret T.	Jan 30 56	A	13
Betz, Alexander	Nasher, Mary	Feb 2 56	A	13
Fortin, Celistin	Mani, Martin	Feb 3 56	A	13
Egan, Patrick	Tell, Ann	Feb 3 56	A	14
Longtine, Octave	Spooner, Oslisum?	Feb 4 56	A	13
Lazias, Jacob	Suffernon?, Onale	Feb 4 56	A	14
Gilkerson, Luther	Bachelor, Mary K.	Feb 5 56	A	13
Durham, Gurden	Hammond, Martha A.	Feb 6 56	A	14
Kappen?, Charles	McCray, Martha	Feb 7 56	A	14
Rush, Elias	Rush, Sarah Jane	Feb 7 56	A	14
Dayton, Reuben	Force?, Almira	Feb 11 56	A	14
Butterfield, Benj. F.	Watson, Ann D.	Feb 12 56	A	14
Dutton, Silas M.	Ervin, Frances E.	Feb 14 56	A	14
Shultz, Charles	Smiditz?, Mlrina?	Feb 18 56	A	14
Leonard, Augustus R.	Aye, Mary F.	Feb 19 56	A	14
Buck, Elisha H.	Shedd, Emeline	Feb 20 56	A	14
Legg, Wm. M.	Harding, Zenlda	Feb 20 56	A	14
Hedges, Alfred	Chadwick, Cloe Amelia	Mar 2 56	A	14
Walton, Albert	Strait, Adeline	Mar 6 56	A	15
Hanford, James A.	Leggett, Elvira E.	Mar 17 56	A	15
Gould, Alexander A.	Pollock, Margaret	Mar 17 56	A	15
Ingham, Augustus	Lanpire?, Elizabeth	Mar 17 56	A	15
Johnson, Warrum	Howe, Phebe A.	Mar 18 56	A	15
Saindon, Theodore	Chauvin, Salina	Mar 23 56	A	15
Murphy, John	Bartlett, Mary	Mar 23 56	A	15
Reseco?, Joseph	Ducloes, Adis	Mar 24 56	A	15
Goodson, Joseph	Delude, Phllomene	Mar 25 56	A	15
Dulude, Joseph	Desezier, Delini	Mar 25 56	A	15
Belisle, Louis	Saint, Matilda	Mar 25 56	A	15

HUSBAND	WIFE	DATE	BOOK	PAGE
Will, Paul	Coloml, Margaret	Mar 25 56	A	15
Houg, Philander	Chipman, Amelico	Mar 26 56	A	15
Diderplisi?, Obcade? Nuso	Archambault, Marl Celina	Mar 26 56	A	15
Chipman, Walter	Davison, Caroline	Mar 26 56	A	15
Thatcher, William	Gumphrey, Sarah Ann	Mar 30 56	A	15
Russell, James	Johnson, Abbey	Apr 2 56	A	15
Wells, James A.	Duling, Louissa	Apr 5 56	A	16
Myers, Edward W.	Francour, Apollina	Apr 6 56	A	16
Hope, Peter	Dasling?, Sarah	Apr 6 56	A	16
Beedy, Langdon J.	Courtright, Abiah Ann	Apr 9 56	M	16
Flowers, John W.	Gay, Jane	Apr 9 56	A	16
Thayer, Wm. Henry	Munion, Mary Ann	Apr 10 56	A	15
Courtright, Samuel	Rowe, Sarah Ann	Apr 12 56	A	16
Chausser, Alexander	Lefvre, Julie	Apr 13 56	A	16
Durfee, Otis	Nichols, Harriet	Apr 15 56	A	16
Palmer, Edmund	Dixon, Catharine	Apr 15 56	A	16
Richardson, W. H.	Lampert, Johannah	Apr 16 56	A	16
Faulkner, John	Bruce, Ellen	Apr 24 56	A	16
Dixon, Andrew P.	Ingham, Hannah	Apr 29 56	A	16
Ramsey, Robert	Baker, Mary E.	Apr 30 56	A	16
White, Marion	Magruder, Sarah	May 56	A	17
Jones, John R.	Butterfield, Angeline	May 1 56	A	17
Bonfield, Wesley	Lamb, Emma	May 8 56	A	17
Patterson, John A.	Contansey?, Adeline	May 10 56	A	17
Sanders, Horace	Dulin, Ann	May 11 56	A	17
Swan, James	Sickljar, Hannahita	May 15 56	A	17
Gardner, Joshua E.	Hill, Mary Jane	May 19 56	A	17
Wood, Napoleon	Belgard, Philomene	May 24 56	A	17
West, Lanson	Hess, Elmena	May 25 56	A	17
Butte, John	Adams, Philomine	May 26 56	A	17
Senecul, Jean Baptiste	Boudreault, Domitilde	May 31 56	A	17
Edwards, Charles W.	Belcourt, Mary	May 31 56	A	17
Young, William D.	Montgomery, Mariah	Jun 1 56	A	17
Miader?, John P.	Fore?, Marla	Jun 7 56	A	17
Bastusil, Alfred	Frisert? Phenalise	Jun 7 56	A	17
Miller, Xavier	Lamieur, Demesler?	Jun 8 56	A	17
Courtemange, Francis	Plante, Matilda	Jun 15 56	A	17
Choquette, Charles	Goyette, Prudence	Jun 19 56	A	17
Chadwich, John	Keay, Helen	Jun 22 56	A	17
Betz, Lewis	Woods, Catherine	Jun 28 56	A	17
Smithy, Robert	Roush, Lovina	Jun 29 56	A	17
Gadbois, Pierre	Grange, Julia	Jun 29 56	A	17
Amiot, Joseph E.	Vanhasen, Isine	Jul 56	A	18
Latrimault, John	Ponton, Julia	Jul 3 56	A	18
Lowe, Sidney L.	Webster, Mary	Jul 3 56	A	18
Dewit?, Martin	Wilkinson, Harriet	Jul 4 56	A	17
Fare, Wm.	Lynn, Amm	Jul 4 56	A	18
Petrow, Ludwig	Hakbusch, Fredericke	Jul 8 56	A	17
Gagnon, Francis	Bap?, Victorine	Jul 8 56	A	18
Hammen, William	Bennett, Sarah Jane	Jul 16 56	A	18

HUSBAND	WIFE	DATE	BOOK PAGE
Durham, Stephen C.	Pinkston, Imlna I.	Jul 17 56	A 18
Huling, Alonzo	Sanfear, Lucy Ellen	Jul 23 56	A 18
Dutcher, Joseph	Pencock, Cloe A.	Jul 27 56	A 18
Shepherd, Theodore	LeClasi, Matilda	Jul 31 56	A 18
Harris, Thomas	Spivey, Sarah Jane	Aug 3 56	A 18
Lavarrice?, Henry	Desosair, Margarite	Aug 8 56	A 18
Bray, Andrew	LeClasl, Sarah Ann	Aug 11 56	A 18
Revoir, Peter	Balthezar, Adelaide	Aug 11 56	A 18
Daunderand, Marcelle	Yerces?, Mary	Aug 14 56	A 18
Andrews, William H.	Aba, Anna Jane	Aug 16 56	A 18
Martin, Elijah	Dsolette, Eliza	Aug 17 56	A 18
Faster, Samuel	Robinson, Sarah	Aug 17 56	A 18
Laplaunt, Casamin	Robechar, Olive	Aug 19 56	A 18
Skinner, Alfred W.	Ladd, Martha A.	Aug 20 56	A 18
Chatfield, James	Brlldell, Sarah Jane	Aug 24 56	A 18
Whittemore, Hiram	Ingalls, Alma M.	Aug 27 56	A 18
Almy, Henry	Lewis, Sarah A.	Aug 31 56	A 18
Chaillsig, Francis	Bowfin, Virginia	Sep 1 56	A 18
Hebert, Peter	Dianne, Mary	Sep 1 56	A 18
Knecht, John George	Frea?, Eliza	Sep 2 56	A 18
Gouchez, Jagurs	Laroush, Hullse	Sep 7 56	A 19
Regnier, Augustin	Frechet, Matilda	Sep 7 56	A 19
Sanachal, Napoleon	Gagnon, Caroline	Sep 7 56	A 19
Saltsider, William	Andrews, Maria Theresa	Sep 20 56	A 19
Hair, Hiram H.	Beuchy?, Mariah	Sep 21 56	A 19
McCabe, Robert L.	Dashule, Amelia Jane	Sep 28 56	A 19
Paulissen, Lambert	Look, Johanna	Oct 3 56	A 19
Carren, Hugh	Gilbert, Margaret	Oct 3 56	A 19
Saindon, Benjamin	Tetreau, Delphine	Oct 6 56	A 19
Pattow, Samuel	Drollle, Mary	Oct 8 56	A 19
Fender, Fredrick	Houg, Eliza Jane	Oct 11 56	A 19
Chamberlain, Samuel	Fender, Nancy E.	Oct 12 56	A 19
Merrick, Lyman B.	Harsh?, Sarah Jane	Oct 13 56	A 19
Love, David	Dyer, Martha J.	Oct 16 56	A 19
Dagepe, Nlcholus	Laflamme, Ausillo	Oct 19 56	A 19
Delamartre?, Richard	Hawker, Sarah Jane	Oct 20 56	A 19
Peters, Milo R.	Richardson, Ellen F.	Oct 22 56	A 19
Holmes, Henry	Vanbuskirk, Hannah	Oct 23 56	A 19
Belanger, Narcisse	Gagnon, Verginla	Oct 26 56	A 19
Vilken, Vilker	Amanzer, Mena	Oct 30 56	A 19
Bloom, John M.	Allen, Mandane?	Oct 30 56	A 19
Sexton, Cyrus	Brainard, Jane Ann	Oct 30 56	A 19
Wilson, Joseph S.	Dycus, Helen	Nov 3 56	A 20
Bourret, Oliver	Richard, Clementine	Nov 4 56	A 20
Carr, Samuel	Nye, Mary C.	Nov 5 56	A 20
Crawly, James	Pesue?, Lydia	Nov 6 56	A 20
Vervais?, Joseph	Boisvert, Emilia	Nov 8 56	A 20
Joubert, Moses	Dahart, Maruner?	Nov 9 56	A 20
Riley, Patrick	Fasith?, Ann	Nov 16 56	A 20
Tibadoux, Joseph	Gonchey, Lucy	Nov 16 56	A 20

HUSBAND	WIFE	DATE	BOOK	PAGE
Sheppard, Jas.	Gates, Lizzie L.	Nov 20 56	A	20
Surprenant, John	Farron, Caroline	Nov 22 56	A	20
Larevlse?, Francois H.	Masson?, Julie	Nov 24 56	A	20
Corvil, John	Latourno, Mary D.	Nov 29 56	A	20
Martino, Anoslphord	Hubert, Basllico	Nov 30 56	A	20
Zace, Philip	Barnia?, Louisa	Nov 30 56	A	20
Lancaster, Loyd	Magruder, Francis	Dec 18 56	A	20
Smith, Ell	Miller, Lucretia S.	Dec 18 56	A	20
Corron, Battese	Sylvester, Phebe	Dec 22 56	A	20
VanWert, John	Miller, Maria	Dec 22 56	A	20
Foot, Herman J.	White, Mary E.	Dec 25 56	A	20
Corrow, Sevinn?	Boprey, Mary Louse	Dec 29 56	A	20
Leuttoff, Fredrick	Beland, Catherine	Dec 31 56	A	20

* * * * *

GREAT AND GREAT, GREATS

ERZLINGER, Ursula b. 18 Aug. 1843 Switzerland
 m. 14 Oct. 1866 Bonfield to George Martin Walter
 d. 22 Dec. 1912 Bonfield

Trying to find out when she came to the U.S. or who her parents were. She mentioned to a family member that she could hear the fall of the Rhine where they lived in Switzerland. Robert E. FRY, 4400 W. Missouri Ave., Space 100, Glendale, AZ 85301

* * * * *

Looking for Information on Mrs. Max BOUDREAU nee MAYOTTE and descendants and on Mrs. Lea/Lela MAYOTTE BREGENZER b. 27 Sept. 1895 and descendants. Both were daughters of Isilda HUBERT and Joseph MAYOTTE. Both lived in Kankakee at some point of their life. Mrs. Mary THIBAUT, P.O. Box 655, Sheldon, IL 60966

* * * * *

GRIGSBY FAMILY REUNION

The National Grigsby Family Society will hold its fourth triennial reunion at Springfield, Illinois, on July 12-15, 1990. The site will be the Ramada Renaissance Hotel, 701 E. Adams Street. A new chapter for the Midwest or North-Central States will be organized. For additional information and registration form, write or call Mrs. Margaret G. Mottley, Administrator, 10138 Valley Forge, Houston, Texas 77042, phone 713/789-5766.

* * * * *

DREW TRAIN HERITAGE SOCIETY OF AMERICA

The society would like to extend a 'thank you' to Cecile Enright for donating a membership in the Orphan Train Heritage Society of America. The membership

will include a copy of their publication CROSSROADS which will be a welcomed addition to our collection.

* * * * *

THE CHICAGO HISTORICAL SOCIETY LIBRARY

Excerpts taken from Origins Vol. VI No. 1 (Newberry Library Newsletter).

One of Chicago's most important historical resources is the Chicago Historical Society at North and Clark Streets just a few blocks north of the Newberry Library. In many ways the holdings of the Library of the Society are complementary to those of the Newberry Library, and may prove to be a major resource for those researching local history or genealogical subjects.

The Chicago Historical Society Library is a rich resource for those interested in Chicago local and family history. The Society, the city's oldest cultural institution, was organized in 1856. Its founders, twelve men led by William Barry, were primarily concerned with the need to preserve historical records before they were lost. Their original mission statement was "to institute and encourage historical inquiry, to collect and preserve the materials of history and to spread historical information, especially concerning the Northwestern States." The first building for the Society, which stood at Dearborn and Ontario, was not opened until 1868. This building was completely destroyed in the great Chicago Fire of 1871 and its entire contents were lost (including over 15,000 bound volumes, 72,000 pamphlets, plus manuscripts and other materials). Other libraries and historical societies very generously donated material to the Society, to help in the rebuilding of its collections. However, all of that material was again lost in an 1874 fire. The Society was not in operation from 1874 to 1878 and was housed in temporary quarters from 1878 until 1896. Within a decade of reopening after both fires, it had come close to regaining the level of collections held before the 1871 fire.

In 1896, a new "permanent" building for the Society was finally opened at the Dearborn and Ontario site. It was designed by Henry Ives Cobb and William Le Baron Jenney and built with funds from Henry Gilpin, John Crerar and a subscription drive. By 1906 that building was filled to capacity and a campaign was started to find a site for a new larger building. It was not until 1932 that the new building in Lincoln Park was finally opened. This structure was designed by Graham, Anderson, Probst and White and still serves as the eastern wing of the Society. In the early 1960's it was clear that space was again tight for the Society's collection and staff and in 1972 a new addition to the 1932 structure, designed by Alfred Shaw and Associates, was opened. Again in the early 1980's it became clear that not even this new addition would serve as adequate storage, exhibition and staff space and a move was begun to build yet another addition to the building. Initially intended to add only improved storage space and convert existing storage space to exhibition and staff areas, it was later decided to also change the exterior of the controversial 1972 addition. The new addition/renovation, designed by Holabird and Root was officially opened in 1988 and included not only the new gallery and storage spaces, but a new lobby, expanded Museum Store, restaurant, renovated reading rooms and two new conservation laboratories. It was during construction on the 1988 addition that disaster again struck the Society when a water main broke and caused serious flooding of the basement of the building. Fortunately, due

to swift action by Society staff members and local conservators (and the fact that several major collections has recently been moved from the basement area) very little of the collection was damaged beyond repair. However, most of the building was closed to the public for almost two months. Fortunately, the Library was only closed for one month at that time.

One of the reasons that the Society has so repeatedly and quickly run out of storage space is that its original collection policy was so broad. It stated: 'We wish to collect and preserve in its Library everything that relates to the history of this country and more especially of Chicago, Illinois, and the northwest....we also desire, as far as possible, to preserve for future generations the history of the world today.' It became increasingly clear as the years went on that this scope would prove too broad and references to world history were dropped. By 1945, It was decided to de-emphasize the collection of general American historical material except 'that which is necessary for reference purposes'. By the mid-1970's the collecting policy had become even more focused specifically on Chicago materials. The present collecting policy has as its primary focus the history of the Chicago metropolitan area, including its suburbs, with special emphasis on the following areas: 'living in the metropolitan area; the built environment; and individuals and their ideas'. In recent years there has been a growing concern with the need to more actively collect twentieth century materials and materials that are more representative of Chicago's very diverse population. Not only has the collecting policy changed in the last 140 years, but the mission statement has expanded greatly from that originally formulated in the 1870's. The current mission statement addresses four areas of concern: 1) documenting the city through collecting and preserving materials; 2) interpreting the collections, through exhibitions, publications and educational programs; 3) serving the city, by making the research collections available to scholars, professionals and the general public, through public programs (such as lectures, films, performances, bus tours, etc.) and through educational programs that bring school children to the Society; and 4) involving the city, through fundraising and the activities of volunteers and support groups.

The Society's collections are housed in and administered by seven separate departments: the Library; Archives and Manuscripts; Prints and Photographs; Architecture; Decorative and Industrial Arts; Costumes; and Paintings and Sculpture. The first two departments are open to the public Tuesday through Saturday from 9:30 a.m. to 4:30 p.m. The Prints and Photographs reading room is open by appointment during those same hours and the remainder of the departments are open only by appointment. Also of interest is the Publications Department which produces the Society's quarterly magazine, Chicago History, as well as numerous other publications emanating from the Society.

The Library contains the published material held by the Society. This includes approximately 113,600 books and pamphlets (including 900 scrapbooks); 3,500 bound newspaper volumes; 8,000 reels of newspapers on microfilms (including extensive holdings of the major Chicago papers, as well as smaller papers such as the Defender and the Reader); 10,585 maps and atlases; 10,000 bound periodical volumes; 5,500 pieces of sheet music; 12,550 theatre, opera, ballet and concert programs; and thousands of pieces of ephemera, such as sports programs, menus, and trade cards. The Library also maintains an extensive newspaper clipping file which was begun in the 1930's. It is comprised of two sections, the first, biographical materials on Chicagoans, and the second,

subject files on different aspects of Chicago, such as buildings, businesses, schools, hotels, restaurants, parks, streets, neighborhoods, etc.

Of particular interest, and value, to the local and family historian is the Library's complete collection of Chicago city and telephone directories. Hardcopies as well as microfilm of the city directories for 1839 to 1928/9 are available in the reading room. The Library also holds Chicago "cross--cross" directories for 1928, 1950, 1952, and 1978 to the present; and suburban directories for 1920 to 1971 and 1978 to the present. The volumes of the Chicago Blue Book for 1890 to 1916 serve as directories of the more prominent citizens of the city.

Other sources of information on individuals are the biographical entries in the card catalog, the biography clipping file, and biographical dictionaries. The card catalog entries are usually limited to birth and death dates and occupation, although this information can be very helpful in locating obituaries. The biographical clipping file primarily covers Chicagoans of the twentieth century, but does include the more prominent Chicagoans of the nineteenth century.

Other materials that might be of interest to a family historian are the Federal census schedules for Chicago and Cook County for 1840, 1850, 1860, 1870, 1880, 1900 and 1910; yearbooks from Chicago high schools and professional schools; church publications, particularly histories of particular congregations; and historical material on Chicago businesses, such as catalogs and anniversary publications.

The Library has various resources for researching the history of homes and other buildings, including clipping files on particular addresses, city directories and fire Insurance atlases. The booklet, Your Home Has a History, published by the Commission on Chicago Landmarks and available at the reference desk, can be very helpful in guiding the building researcher.

The Library has a wealth of material on the neighborhoods of Chicago and the numerous ethnic populations in the city. By using the sources mentioned above the family historians can flesh out bare details of their genealogies with information on the areas where their families lived, the churches and schools they attended, the firms they worked for, and the cultural life in which they participated.

The Library has only very limited holdings of local histories for areas outside of Chicago and its suburbs. It does not actively collect family histories, as these are so well represented at the Newberry Library. It also does not hold official documentation such as birth, marriage and death certificates; naturalization records; land deeds; and military pension records.

There is no charge to use the Library or the other research collections of the Society. All of the materials are listed in the card catalog and are retrieved on request. While the staff is not large enough to undertake extensive research projects for patrons, specific questions can be answered either over the phone or through the mail. The Society's phone number is 312/642-4600 and the address is: Chicago Historical Society, Clark St. at North Ave., Chicago, IL 60614.

The museum portion of the Society is open to the public Monday through Saturday from 9:30 a.m. to 4:30 p.m. and on Sunday from noon to 5 p.m. Admission to the museum is \$1.50 for adults and \$.50 for children and senior citizens. Admission is free on Mondays. Membership in the Society is available at an annual cost of \$30 for Individuals. \$35 for a family/dual membership, and \$25 for students and senior citizens.

* * * * *

KANKAKEE COUNTY GRAVE MARKERS

There's been a positive response to the photographs of grave markers and a request that we type out the information on the markers where they're hard to read. Starting with this issue we will type out all marker information, and the following is a list of the information on previously published grave markers:

DeSelm Cemetery:

Elizabeth Guilford
Died Feb. 11, 1882, Aged 75 yrs. 5 ms. 11 days

Henry A.
Son of H.L. & L. Muncey
Died Aug. 16, 1862, Aged 1 yr. 4 mos. 15 days
"He sweetly sleeps while others weep, he never can
return. But to the skies his spirit flies, and there
is newly born."

George J. Shanbaker
Died Feb. 26, 1860, Aged 31 yrs., 1 mo. & 8 days

Richard G. Stanton
July 2, 1848 - Nov. 9, 1873

Effie K.
Wife of C. T. Noble
Died Mar. 39, 1876, Aged 23 yrs. 7 days

Ralph Walton
Died Aug. 21, 1864, Aged 73 yrs. 6 mos.

Shreffler Cemetery:

T. H. A. Smith
Died Sept. 6, 1877, Aged 11 years His
Last Words

Sirous & Silous
Sons of M.F. & E. Shreffler
Died Mar. 11, 1853, Aged 21 days
"I watched them with increasing care and pleasure day
by day. But soon there came a mighty wind and swept
my flowers away."

Catharine Lash
Died Nov. 27, 1858, 57 yrs. 10 mos. & 4 days

Regina, Wife of Peter Shreffler
Died Sept. 21, 1875, Aged 33 yrs. 10 mos. 22 days

Infant Dau. of C. & M. J. Williams, Jr. Died May 28,
1860

E. W., son of W. & M. A. Mensing
Died Mar. 4, 1887, Aged 3 yrs. 10 mos. 20 days
'It was..... that the and took a flower away.'

Mrs. Elizabeth Michaels
Born Feb. 28, 1822, Died Jan. 15, 1888

John, son of P. & M. Ostrander
Died Oct. 27, 1861, Aged 22 yrs. 6 mos. 10 days

Limestone Cemetery: In Memory of Sabra Anna Hawkins
Wife of Geo. W. Byrns
Died Sept. 4, 1865, Aged 52 yrs.

America A., daughter of James H. & Ann Rounsavell
Died Dec. 3, 1851, Aged 3 yrs. 6 mo. & 17 days

Emily R., wife of E. H. Cooley
Died Feb. 22, 1891, Aged 19 yrs. 5 mo. 15 days H. H. Cooley,
Died March 24, 1898
Aged 75 yrs. 8 mo. 5 days

"In my Father's house are many mansions" John XIV2
"There is a bright region above. We long to reach
its shore. To join with dear ones we love. Not
lost but gone before."

Albert, son of Andrew & Sarah M. Wiley Died Dec. 4,
1831?

Abiah Vaughn
Died Nov. 7, 1854, Aged 91 years, 8 mo., 13 days

Caroline M., wife of Alvin Newton Died Mar. 27,
1854, Aged 36 yrs.

Lydia C., dau. of F. H. & E. R. Cooley Died Sept. 20,
1870, Aged 1 yr. & 5 days

George W., Son of James & Ann Rounsavell Died

* * * * *

ST. ROSE CEMETERY
Kankakee, Illinois



Katharina, wife of Dr. L. Bruckmayr, died Oct. 2, 1865, aged 72 years



F. Beauchamp, died July 8, 1877 aged 51 yrs. 1 M. 21 D. Gone but not forgotten



Rosette, Epouse de François Sanesac Decedee le 21 Février 1873, aged de 10 Mois 16 Jour/Joseph Pierre Sanesac, decedee de 11 Mars 1874, aged de 18 Jours



Bridget, wife of E. Manning Born Sept. 3, 1829 Dfied Mch. 18, 1889



Odile Lague, born Trembley
died August 8, 1887, age 61



A la memoire de Constance Rivard
spouse de Pierre Drolet, née b. 17 Mars
1813, decedee le 27 Juin 1893 R.I.P.



Louisa Burch, born in Alsace, Germany
May 25, 1850, died Aug. 28, 1889



Patrick Power, native of Wexford,
Ireland, died Aug. 15, 1866, aged
52 yrs., Rest in Peace

BOOKS IN GENEALOGICAL ROOM - KANKAKEE PUBLIC LIBRARY

Section 4 (Red) - War Records

SOME TENNESSEE HEROES OF THE REVOLUTION, Zella Armstrong, Genealogical Publishing Co. 1982.

TWENTY-FOUR HUNDRED TENNESSEE PENSIONERS: REVOLUTION. WAR OF 1912'. Zella Armstrong^d. Genealogical Publishing Co. 1987.

VIRGINIA'S COLONIAL SOLDIERS, _____ Lloyd Dewitt Bockstruck, Genealogical Publications Co., 1988.

VIRGINIA SOLDIERS IN THE UNITED STATES ARMY. 1800-1815, Stuart Lee Butler, Iberian Publ. Co., 1986.

MERCENARY TROOPS FROM ANHALT-ZERBST. GERMANY: WHO SERVED WITH THE BRITISH FORCES DURING THE AMERICAN REVOLUTION, Virginia Easley DeMarce, Westland Publications, 1984.

1890 CIVIL WAR VETERANS CENSUS - TENNESSEE, Byron Sistler & Assoc. 1978.

INDIANA WAR OF 1812 SOLDIERS MILITIA, Charles Franklin, Ye Olde Genealogie Shoppe, 1984.

GEORGIA'S ROSTER OF THE REVOLUTION, Compiled under the authority of The Legislature by Lucian Lamar Knight, Genealogical Publishing Co., 1967.

MILITARY GENEALOGICAL SOURCES, John Heisey, Heritage House, 1986. BESSISCHE

TRUPPEN IM AMERIKANISCHEN, Marburg Archives, 1972, 5 Volumes.

TEXAS FRONTIERSMAN. 1839-1860, Frances Terry Inggmire, Insaire Publications, 1982.

A LIST OF NON-COMMISSIONED OFFICERS AND SOLDIERS OF THE VIRGINIA LINE, Ye Olde Genealogie Shoppe.

LIST OF 1773 NAMES OF HESSIAN SOLDIERS SENT TO THE U.S. DURING THE REVOLUTIONARY WAR, Ye Olde Genealogie Shoppe.

MEMORIALS OF DECEASED COMPANIONS OF THE COMMANDERY OF THE STATE OF ILLINOIS. MILITARY ORDER OF THE LOYAL LEGION OF THE U.S.,

MILITARY SERVICE RECORDS, National Archives.

ROSTER OF SOUTH CAROLINA PATRIOTS IN THE AMERICAN REVOLUTION, Bobby Gilmer Moss, Genealogical Pub. Co., 1983 (2 copies).

CONFEDERATE RESEARCH SOURCES; A GUIDE TO ARCHIVE COLLECTIONS, James C. Neagles, Ancestry, 1986.

SUMMER SOLDIERS; A SURVEY AND INDEX OF REVOLUTIONARY WAR COURT MARTIALS, James C. Neagles, Ancestry, Inc., 1986..

ROSTER OF SOLDIERS. SAILORS. AND MAINES...WHO ENLISTED FROM THE STATE OF INDIANA, Nebraska State Genealogical Society, 1985.

ROSTER OF SOLDIERS. SAILORS. AND MARINES...WHO ENLISTED FROM THE STATE OF OHIO, Nebraska State Genealogical Society, 1984.

ROSTER OF SOLDIERS. SAILORS. AND MARINES...WHO ENLISTED FROM THE STATE OF PENNSYLVANIA, Nebraska State Genealogical Society, 1985.

OFFICIAL RECORDS OF THE UNION AND CONFEDERATE NAVIES IN THE WAR OF THE REBELLION, Government Printing Office, 1912.

INDEX TO OHIO PENSIONERS OF 1883, W. Louis Phillips, Heritage Books, 1987.

PIERCES REGISTER, Register of the certificates issued by John Pierce, paymaster General and commissioner of Army accounts. Genealogical Pub. Co. 1973.

REPORT OF GETTYSBURG BATTLEFIELD MEMORIAL COMMISSION. 1914, Wm. Stanley Ray, 1914.

REVOLUTIONARY PENSIONERS: AN ALPHABETICAL ABSTRACT OF THE PENSION LIST OF 1813, W. F. Hulse, 1955.

REVOLUTIONARY SOLDIERS IN ALBAMA, Compiled by Thomas Owen; Genealogical Publishing Co., 1975.

RHODE ISLAND MILITARY CENSUS. 1777, Transcribed by Mildred Chamberlain, Genealogical Publication Co., 1985.

MICHIGAN MILITARY RECORDS, Sue I. Silliman, Genealogical Pub. Co., 1969.

SOUTH CAROLINA SOLDIERS AND INDIAN TRADERS. 1725-1730, Compiled by Tony Drain and John Skinner; Congaree Publishing, 1986.

SUPPLEMENT TO THE NATIONAL GENEALOGICAL SOCIETY QUARTERLY. MARCH 1943: REVOLUTIONARY WAR PENSION AND BOUNTY LAND RECORDS.

SURNAME INDEX TO ROSTER OF SOLDIERS AND PATRIOTS OF THE AMERICAN REVOLUTION BURIED IN INDIANA, Fort Wayne Public Library, 1976.

TEXAS VETERANS IN THE MEXICAN WAR: MUSTER ROLLS OF TEXAS MILITARY UNITS. Ingmire Publishing, 1984.

VIRGINIA REVOLUTIONARY WAR STATE PENSIONS, Virginia Genealogical Society, Southern Historical Press, 1982.

AN INDEX TO THE COMPILED SCIENCE RECORDS OF VOLUNTEER SOLDIERS. 1784-1811, Barbara Wolfe, Ye Olde Genealogie Shoppe, 1986, 2 Volumes.

Vol. 1: Surnames A - E

Vol. 2: Surnames F - L

..... to be continued.

* f t *

COUNTY COURT - 1876

Taken from The Kankakee Gazette, March 23, 1876.

Joseph Gauthier appointed guardian of children of Josphe and Louise Lafferty.

D. C. Grinnell's appointment as administrator of estate of Mauritz Look approved; bond of \$10,000. Inventory and appraisal bill approved.

Administrators discharged; estates Pierre Beauregard, Eusebe Fife, John Hermann.

Estate Alfred Deslauries. Claim of Amable Larocque for \$557.30, with interest from Jan. 27, allowed.

F. D. Radeke and J. F. Dierking appointed guardians of Kaste heirs; bond of \$1,000. Same persons appointed conservator of Mark Kaste, insane.

Estate of Henry Kaste, Order of distribution and publication for final settlement.

Estate of Carl White. Inventory approved.

Estate of Camille Sprimont. Final report filed.

Estate of W. C. Richards. Widow's selection approved.

Estate of Silas N. Metcalf. Same order.

Estate of Edward A. Porter. Claim of Nichols & Cooke for \$5.35 allowed.

Reports approved in estates of Nathaniel Storrs, Charlotte Patterson and Merrit Patterson.

Clemence Sprimont appointed guardian of children of Camille Sprimont; bond of \$1,000.

* * * * *

Taken from The Kankakee Gazette, April 6, 1876.

Conservator of Louis Goyette given leave to sell real estate.

Certificates of naturalization issued to Henry Brandand Wm. Mensing.

People vs. Alex. G. Robinson; bastardy. Counsel objected to the jurisdiction of the court; objection overruled, and continuance to next term granted in bond of \$1,000.

Orders of distribution In estate of Solomon Kellogg.

Estate of John Stratton. Report filed and continued.

Certificates of naturalization issued to Louis Dahn and Christian Kakok,

John Dale was appointed administrator of estate of A. S. McKee, bond of \$4,000.

Estate of Hiram Eldred. Report of administrator made at February term set aside. Order of publication of resignation of administrator.

Claim of John Neils against estate of Chas. White for \$136 ordered discharged by administrator delivering to Neils the latter's note.

Certificates of naturalization issued to David Lwig, Dutroch Zahn, Phillip Heiller and Wm. O'Connors.

Adolphus Legris appointed administrator of estate of Francis Marcotte, bond \$10,000.

* * * * *

Taken from The Kankakee Gazette, May 4, 1876.

Lambert Paullison appointed guardian for Anna and Theodore Look, and Garrett Paullison for Garrett and Frank Look, in bonds of \$5,000 each.

Henry C. Kibbon appointed adm'r of the estate of L. H. Kibbon.

Slocum Wilber appointed adm'r of estate of Simon Russell In bond of \$2,400.

Report approved In estate of E. S. Lanfear.

Chas. Hoevet appointed adm'r of estate of Louis Toms.

Claim of August Kuntz for \$18 against estate of Carl White allowed.

Frederick Hensing appointed guardian of minor children of Lewis Kutemeyer, bond of \$2000.

Claims against estate of Marcele Labrie allowed; L. Goudreau \$6.66; Alex. Gosselin \$25.74; W. Bonfield \$4.59.

Resignation of D. R. Swartwout as adm'r of estate of Hiram Eldred accepted.

Estate of Francis Marcott: Reports, etc., approved; leave to sell property described in adm'r petition.

Claim of M. D. L. Hunter for \$249.62 against estate of John Stratton allowed; report of March 21 approved.

Hiram Whittemore appointed conservator of Joseph Whittemore upon publication of legal notices.

Rebecca Hollman appointed guardian of George and John Hollman.

In the matter of the petition of W. F. Kenaga and others for a ditch, commissioners report was approved, and a jury to assess damages and benefits sworn.

Reports approved in conservatorship of Louis Goyette.

Reports approved in estate of Lewis T. Whipple and estate declared settled.

Samuel J. Lake appointed adm'r of James H. Bennett, bond of \$2000.

* * * * *

Taken from The Kankakee Gazette, June 1, 1876.

In the matter of the application of the people of the State of Illinois for judgment on delinquent lands and lots for the taxes of 1875 and back taxes, special assessments, interest, penalties, printer's fees and costs due thereon, James Mix entered objections to judgment upon certain lands. Objections overruled and judgment entered against all lands in the corrected list, except those of H. P. Danforth, which were shown to have been erroneously assessed and taxed. Appeal granted James Mix, bond of \$2,500.

Estate of Mauriz Look. Claims allowed: D. J. N. Fraser, \$35; Dr. J. H. Way, \$20; E. G. W. Reitz & Bro. \$27; Henry Keller, \$350.66; Gerhard Paulisson \$314.55; Hans Anderson, \$10; C. Lohrman \$10.21; Henry Licht, \$20; Charles Schneider, \$30; R. D. Sherman \$18.60.

Limestone ditch matter, assessment field.

Estate Carl White. Ordered that Henry Licht pay over to administrator \$357.44 within one month; citation then to be discharged.

Conservatorship of Joseph A. Whittemore - Proofs filed. Bond of \$10,000 approved.

Horatio D. Worcester appointed administrator de bonus non estate Albert Worcester.

Petition Simon Allard for a ditch. J. K. Crosswell, Leon Mailoux and Joseph Barcolow appointed commissioners.

Incorporation of Waldron

Petition of E. R. Beardsley and others to appoint an election to vote for or against village organization for the village of Waldron. Election ordered on the 10th of June next at the office of Robt. Ranney, and Revillo Beebe, E. R. Beardsley and H. W. Ingalls appointed Judges.

* * * * *

COUNTY HISTORIES - 1876

Taken from The Kankakee Gazette, May 4, 1876.

The suggestion of Gov. Beveridge that a history of each county in the State be prepared as a part of the centennial celebration is an excellent one, and if the proper person can be engaged to collect and arrange the materials a most valuable as well as interesting volume can be made. Aside from the records in the various counties, which will furnish a large mass of the projected work, the personal recollections of the old settlers could be advantageously used. Unfortunately, in this county, the former publishers of Gazette did not preserve files of the paper, and a great deal of public and private history which can be found nowhere else, and is not now accessible, has been lost. Still, there are other sources from which many facts can be gathered, which, after the lapse of a very few years, will be a hopelessly lost as the files of the Gazette (the first paper in the county) If they are not now utilized. Such histories as the Governor suggests would be starting points for future contributions, and a continuous history thus prepared with comparatively little labor and expense.

We hope this matter will receive the attention of the people of this county, and some competent person engaged to do the work.

* * * * *

THE ASSESSMENT - 1876

Taken from The Kankakee Gazette, May 4, 1876.

Proceedings of a meeting of the township assessors of Kankakee county for the year 1876, at the court house in the city of Kankakee, April 26, 1876. Assessors met pursuant to call, and those present were Otis Durfee, Kankakee; H. S. Bloom, Rockville; G. W. Rice, Momence; Lue Bissett, Bourbonnais; Cephas Williams, Limestone; Henry L. White, Essex; Robt. Ranney, Aroma; Moses Chartier, St. Anne.

The meeting was called to order by selecting H. S. Bloom chairman. On motion, they proceeded to arrange a basis for listing personal property as follows:

1st Horses - Horses to average \$40 each; 3 year old colts \$30; 2 year old colts \$20, and yearlings \$10 each.

2d, Cattle - Cows to average \$14 each, 2 year olds \$10, and 1 year olds \$5 each.

3d. Mules to average the same as horses.

4th. Sheep to average \$1 per head.

5th. Hogs to average \$2 per 100 pounds.

6th. Sewing Machines to average \$15 each.

7th. Wagons to average \$25 each.

All other personal property to be listed at its fair cash value and in same proportion as articles averaged.

The following was agreed upon as a fair proportion in which the lands in the several towns should average per acre:

Kankakee	\$20.00 per acre
Yellowhead	15.00
Sumner	14.00
Manteno	15.00
Rockville	14.00
Momence	3;00
Ganier	12.00
Bourbonnais	17.00
Limestone	7.00
Salina	6.50
Essex	7.00
Norton	9.00
Pilot	10.00
Otto	11.00
Aroma	12.50
St. Anne	6.00

On motion, the county clerk was requested to present the above figures to the board of supervisors at their July meeting, as In the Judgment of the assessor the proper average per acre at which; the several towns should be assessed.

Whereupon the meeting adjourned sine die. H. S. Bloom, Chairman. Walter W Todd, Co. Clerk.

* * * * *

INSURANCE

In All Its Branches

Life, Accident, Health, Fire, Lightning, Tornado, Wind-storm, Automobile and Live Stock Insurance in the best old line companies at lowest possible rates.

Insure today - tomorrow may be too late.

F. G. WILSON

Farmers' Phone 22-4

BONFIELD ILLINOIS

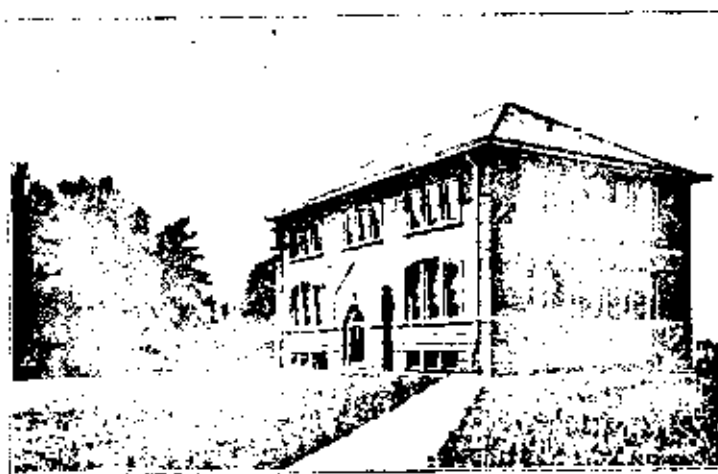
Obrecht Bros. Auto & Garage
Smith, H. W. Barber Shop
Snyder, C. E. Cement Contractor
Stehr, Fred. Stock Buyer
Steyer, John G. Boots, Shoes & Harness
Swenson, H. A. Soft Drinks
Wendelman, F. Shoe Repairing
Wilson, F. G. Insurance

BUCKINGHAM

Armitage, V. A. Building Material
Bank of Buckingham
Bidders Hotel
Gross, Otto. Grain
Haight & Mayhood. Store
Holstein, W. D. Physician
Inkster. Elevator, Grain
Tutland, H. Oil Co.
Urkin, J. General Store

ESSEX

Allison, J. W. Physician
Gray Bros. General Store
Hasemeyer, W. Furniture
Huber, A. Contractor
Lee, J. Hotel
Mulligan, W. Meat Market
Palmer & Burgers. Hardware
Palmer & Ruhl. General Store
Scroggins, E. A. Contractor
Scroggins, W. A. General Store



THE PUBLIC SCHOOL BUILDING AT GRANT PARK

Grant Park Believes in Providing the Best of Educational Facilities for its Children, and Spares no Expense in Providing Buildings and Equipment

GRANT PARK

Anchor, The. Newspaper
Bennett, C. W. Real Estate
Blank, Julius. Plumbing & Tin Shop
Brand, Albert. Garage & Auto
Brown, H. W. Drug Store
Carr, O. S. Physician
Curtis Trust Co.
Diggs & Son. Meat Market
Farmer's Elevator Co. Grain
Farmer's State & Savings Bank.
Fryman, H. W. Dentist
Finney, William. Tinners & Peka Light
Gelino, J. M. Batching & Feed
Gleason Coal & Lumber Co. Lumber & Coal
Grant Park Creamery.
Grant Park Hotel
Grant Park Motor Co.
Auto, Accessories & Repairs
Grant Park Trust & Savings Bank.
Hopkins, F. Insurance
Hubble, P. A. Hardware
Higgins Brick Co.
Jackson, C. A. Veterinary Surgeon
Jacks, E. Grain
Jensen, H. Barber Shop
Kanneman, J. Meat Market
Kramer, John. General Store
Kuhn, Paul. Grain Co.

E. C. STREETER, Sec'y.

Streeter-Kallgren Lumber Company

Capital-Stock \$20,000.00

Lumber, Coal
and Building
Material
DRAIN TILE
UNIVERSAL CEMENT

Branch Yards, Sullist and Puder

Phones: Bell 117, Ind. 20

Grant Park, Ill.



Ford Headquarters

Full line of Ford repair parts kept in stock at all times. We also have an expert repair man who superintends all repair work. Make this your headquarters when in Grant Park

Federal and



Grant Park Motor Co.

Grant Park, Illinois

C. A. NEWTON
Manager

One Block North Bank Corner

Justice of Peace

Notary Public

C. A. Newton

Real Estate
Farm Loans

Life, Fire, Live Stock and
Automobile Insurance

Northwestern Mutual Life
Fireman's Fund Ins. Co.
National Fire Insurance Co.

GRANT PARK CREAMERY

Incorporated
JACOB OHM, President
F. H. BAILEY, Vice-President
CHARLES RAYBORN, Secy & Treas.
THOS. H. SPRAY, Manager

*Pasteurized Cream
and Butter*

Give us a trial

Phone No. 77
GRANT PARK, ILLINOIS

A. C. BRAND GARAGE



We sell and re-com-mend the following Triple 'G' Goods—
 U. S. Tires
 Goodyear Tires
 Champion Oil
 Willard Plus Storage Batteries

Valley Agency
 "The Car of Quality"

Accessories
 Expert Repairing
 Battery Charging
Grant Park, Illinois



A VIEW OF THE CENTRAL SECTION OF GRANT PARK, ILL.
 Though numbering less than a thousand in population, Grant Park is one of the chiefest towns of Illinois.

EDWARD C. CURTIS, Pres.; CASS J. HAYDEN, Vice-Pres.;
 NORMAN GRIFFIN, Cashier.

Grant Park Trust & Savings Bank

GRANT PARK, ILL.

Organized Under the Laws of the State of Illinois

Paid Up Capital.....\$150,000.00
 Additional Liability.....150,000.00
 Total Responsibility.....\$300,000.00

STATEMENT

AT THE COMMENCEMENT OF BUSINESS
 WEDNESDAY MORNING, MAY 2, 1917

RESOURCES

Loans and Discounts.....\$ 907,939.33
 Bonds and Securities.....700.00
 Banking House and Fixtures.....15,000.00
 Cash on Hand and in Banks.....143,969.53
 Total.....\$1,067,608.86

LIABILITIES

Capital Stock Paid in.....\$ 150,000.00
 Undivided Profits.....11,580.57
 DEPOSITS.....906,028.29
 Total.....\$1,067,608.86

DEPOSITS

December 20th, 1907.....\$200,866.14
 December 20th, 1908.....237,935.55
 December 20th, 1909.....305,605.75
 December 20th, 1910.....370,645.56
 December 20th, 1911.....462,397.41
 December 20th, 1912.....481,443.16
 December 20th, 1913.....489,153.16
 December 20th, 1914.....504,487.47
 December 20th, 1915.....615,455.31
 December 20th, 1916.....736,023.58
 May 1st, 1917.....806,028.29

EDWARD C. CURTIS
 CASS J. HAYDEN
 NORMAN GRIFFIN

President
 Vice-President
 Cashier

PRAIRIE FARMER'S RELIABLE DIRECTORY

Kurtz, Richard..... *Grain* & *Furnishings*
 Lawrence, Chas..... *Implement & Blacksmith*
 Martin, LeRoy..... *Barber Shop*
 Mosker, H..... *Blacksmith*
 Mosker, H..... *Blacksmith*
 Newton, H..... *Blacksmith*
 Chas. A..... *Auto Supplier*
 Smith, C. H..... *Blacksmith*
 Streeter, Kathryn Lumber Co.
 Lumber, Coal, *Building Material*
 Streeter, S. C..... *Attorney*
 Truitt, August..... *Attorney*
 Vander-smith, S. A..... *Restaurant*
 Van Horn, G. W..... *Drugs*
 Van Horn, G. W..... *Physician*
 Wheeler, Herbert..... *Physician*
 Wilkous, Henry..... *Attorney*

HERSCHER

Citizens State Bank
 Cady, Geo. H..... *Lighting Plants*
 Corbin, E. H..... *Hardware*

Dickman, Henry..... *Auctioneer*
 Eastwood, J. N..... *Machine Shop*
 Gaus, H. & Son..... *Lumber and Coal*
 Herscher, Wm..... *Newspaper*
 Hipke, W. W..... *Drugs*
 Inger Bros..... *Grain*
 Karcher, J. & Son..... *Grain and Coal*
 Kline, W. H..... *Blacksmith*
 Lambert, Sam..... *Meat Market*
 Lehman, Frank..... *Lumber & Coal*
 Lester, W..... *General Store*
 Lechner & Amick..... *Hardware*
 Mathis, J..... *Blacksmith*
 Mackelsohn, Ella..... *Millinery*
 Parker & Parker..... *General Store*
 Smith, Sam..... *Physician*
 State Bank of Herscher..... *Meat Market*
 Steffe & Son..... *Grain*
 Wagner Bros..... *General Store*
 Wapprecht & Schenk..... *Drugs*
 Westman, H..... *Physician*
 Windes, C. J..... *Blacksmith*
 Wisner, L. G..... *Blacksmith*
 Wright, F. F..... *Lumber*

KANKAKEE CLASSIFIED BUSINESS DIRECTORY

ABSTRACTS OF TITLE
 Kankakee County Title & Trust Co.,
 103 N. Schuyler Ave.

ARCHITECTS

Hewitt, C. D., 219 Cobb Bldg.

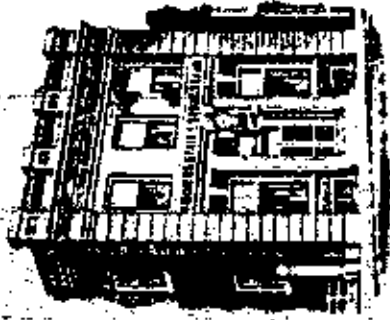
AUTOMOBILES

Bebel, F. A., 545 E. Court
 Balthasar Electric Garage, 545 E. Court.
 Parlin, C. A., 151-159 E. Station
 Gray, Arthur E., 23 E. Station
 Kankakee Auto & Implement Co.,
 120-140 W. Court.
 Kankakee Automobile Co., 860 N.
 Greenwood Ave.
 O'Neil, Wm. H., 231 N. Dearborn Ave.
 Overland-Mann Company, 139-143 N.
 Dearborn Ave.
 Pratt & Hultsch, 140 N. East Ave.
 Keel & Wiles, 164 E. Oak.

AUTOMOBILE ACCESSORIES

Bebel, F. A., 545 E. Court
 De Laplante, Ralph, 341 S. Harrison
 Ave.
 Parlin, C. A., 151-159 E. Station.
 J. A. Heat & Rogers, 144 N. Schuyler
 Ave.
 Overland-Mann Company, 139-143 N.
 Dearborn Ave.
 O'Neil, W. H.

FARMERS AND BREEDERS, KANKAKEE COUNTY



Paid Up Capital \$25,000.00

OFFICERS

J. W. Kahney, President
 F. H. Bailey, Vice-President
 Charles Rayburn, Cashier
 Mary Moscher, Asst. Cashier

FARMERS STATE & SAVINGS BANK
GRANT PARK, ILLINOIS

Organized by Farmers for Farmers

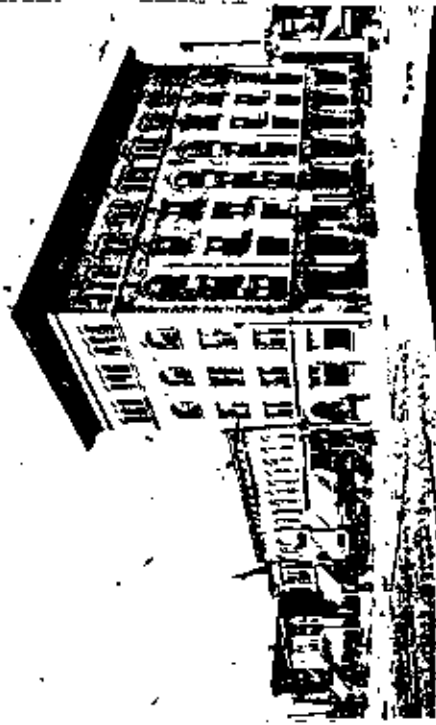
Pays 4% Interest on Savings

Safety Deposit Boxes for Rent
 Your Banking Business Solicited

DIRECTORS

W. B. Reilly
 Edward Hemsley
 Henry Wilken
 J. F. McNeely
 J. W. Kahney
 Jerome Berlin
 Charles Rayburn





COURT STREET WEST FROM SCHUYLER, KANKAKEE, ILL.
First National Bank Building in the Foreground

BARRERS

- Bechard, Edmund, 247 W. Court
- Boucher, Edward, 274 W. Court
- Bourgeois, E. G., 538 E. Cypress
- Burgess, A. T., 794 Main
- Calabro, Rosario, 444 N. Fifth Ave
- Chandler, G. L., 523 S. Washington Ave

Chilton, Frank, 185 Broadway, Brad-

by

- Dalley, F. B., 530 E. Cypress
- Danner, O. F., 182 S. East Ave
- Fiers, L. K., 237 S. Schuyler Ave. and
- 140 F. Merchant

Jackson & Chappert, 211 S. Schuyler

Ave.

LaCost, Stephen, 542 N. Fifth Ave.

Marcotte, Narcisse L., 68 College Ave.

Branch

Morrisette, A. M., 764 Main

Morrisette, A., 298 S. East Ave.

Parkhurst, J. C., 186 S. Schuyler Ave.

St. John, Charles, ground floor Colby

Blk

Sprumont, J. F., 148 E. Court

Taylor, Napoleon, 651st City Nat

Bank Bldg.

Wolf, J. H., 422 S. East Ave.

BATHS

- Barrett Hospital, cor. Harrison Ave. and Boylston

BEAUTY PARLORS

- Clay, Mrs. Nellie, 241 E. Court
- Linden, Miss Emma, 296 E. Court

BEED MANUFACTURERS

- Turk, Joseph, Maple Co., West Ave. cor. Perry Bradley

BICYCLES

- Portin, G. A., 159 F. Station
- Brock, Edgar F., 141 E. Station

BIRD HOUSE MANUFACTURERS

- Dodson, Joseph H., 701 S. Harrison Ave.

BLACKSMITHS AND HORSESHOERS

- Beaulieu, Arsene, 126 Main Road
- Bertrand, Mitchell, 10 Station W. Kan.
- Brousseau, Edward, 112 Main Road
- Contois, Alfred, 126 N. East Ave.
- Draze, F. A., 559 S. Washington Ave.
- Kapfen, Peter, 186 T. Imbach Ct.
- Keizer, Isadore, 214 W. River
- Lueth Bros., 602 618 E. Court
- Neumann, Wm., 357 W. Bourb.
- Verdill, Wm. A., rear 347 F. Court
- Russell & Smith, 359 S. West Ave.
- Schneider, L. & Son, 197-199 S. West Ave.

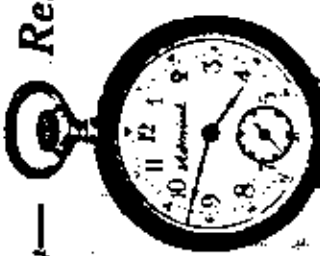
Tetrault, Simon F., 2 College Branch

- Wulf, Theodor, 562 S. Washington Ave.

SPEICHER BROS. JEWELERS

Quality—Reliability

- Watches
- Diamonds
- Silverware
- Jewelry
- Cut Glass
- Novelties



Watch and Jewelry Repairing a Specialty

127-133 S. Schuyler Ave. : KANKAKEE, ILL.

GOOD PURE BRED STOCK, well cared for, and well fed, gives good results. Have you a nice herd of milch cows and a good silo on your place? If not, you are all out of luck, for the best farmers in the country tell us that the dairy business is more profitable than any other product produced on the farm.

We are spending thousands of dollars to fit our plant for all the good, well-cared for milk that can be produced in a radius of 15 miles of Kankakee. So if you are not one of our many well satisfied milk producers, get in line. We will be glad to have you call at our factory when in town and talk the matter over with our creamery foreman.

KANKAKEE PURE MILK CO.

ILLINOIS

KANKAKEE

Chart no. /

	Conrad Schultz

	:B
Laurance Samuel Schultz	:M

	:D
:B 14/05/1885 Polk Co. Iowa ?	:
:M 1923 Elk Point, So.Dak. Union Co.	:Ida M. Barnes
:D 25/04/1967 Sioux City, Iowa Woodbury Co	-----
Clifford Lawrence Schultz	:B 01/1862 Iowa
-----	:M
:B 10/01/1924 Sioux City, Iowa	:D Sioux City Iowa Woodbury Co.
:M 17/09/1942 Ponca Ne.	
:Living South Sioux City, Nebraska 68776	Josef Breitner

	:B 05/02/1855 Preinerszell West Germany
:Ursula Breitner	:M 1884
-----	:D 08/03/1925 Freising West Germany
:B 18/01/1890 Friesing West Germany	:
:M 1923 Elk Pt. South Dakota Union Co.	:Walburga Hockmeyer
:D 16/07/1970 Sioux City, Iowa Woodbury Co	-----
	:B 23/02/1863 Baisenhansen West Germany
	:M 1884
Dan Clifford Schultz	:D 17/01/1930 Freising West Germany

:B 04/02/1952 Sioux City, Iowa	William T. Jones
:M 10/09/1977 Sioux City, Iowa (Morningside	-----
:Living Bonfield Il. 60913	:B about 1837 Kentucky
	:M before 1860
	:D died approx. 1899 Battlecreek, KS Linco
Edward Jones	-----
:B 17/10/1877 Clarinda Iowa Page Co.	:
:M 30/03/1923 Sioux City, Iowa Woodbury Co.	:Synthia Irwin
:D 26/12/1942 Sioux City, Iowa Woodbury Co	-----
	:B March 1843 Tennessee
Helen Elizabeth Jones	:M before 1860
-----	:D
:B 17/02/1924 Sioux City, Iowa	
:M 17/09/1942 Ponca Ne.	Kari (Charles) E. Rysta
:Living Sioux City, Iowa 51106	-----
	:B 26/05/1861 Trondhjem Norway
:Laura Elydia Rysta	:M 10/10/1892 Ishpeming Michigan Marquett
-----	:D 15/10/1946 Sioux City Iowa Woodbury Co.
:B 17/09/1893 Ishpeming Michigan Marquette:	
:M 30/03/1923 Sioux City, Iowa Woodbury Co.	:Anne Nelson
:Living Sioux City, Iowa 51106	-----
	:B 17/01/1871 Kristiansand NORWAY Evjesoken
	:M 10/10/1892 Ishpeming Michigan Marquett
	:D 17/01/1963 Sioux City Iowa Woodbury Co.

MR. & MRS. DAN SCHULTZ
447 WARNER BRIDGE ROAD
BONFIELD, IL 62913

Chart no. 10

	Franz Xaver Breitner	B M D
	B M D	
Josef Breitner		B M D
B 20/02/1813 M 22/11/1841 D 06/02/1867		
	Ursula Diettenhofer	B M D
	B M D	
Josef Breitner		B M D
B 05/02/1855 Preinerszell West Germany M 1884 D 08/03/1925 Freising West Germany		
	Josef Schrott	B M D
	B M D	
Walburga Schrott		B M D
B 03/03/1818 Oberlauterbach West Germany M 22/11/1841 D 29/04/1882 Preinerszell West Germany		
	Theres Mitterhuber	B M D
	B M D	
		B M D

Chart no. 1D

Thomas Hockmeier	
B	
M	
D	
Michael Hockmeier	
B 02/02/1822 Eschelbach West Germany	
M 04/09/1850	
D 04/01/1883 Geisenhausen West Germany	
Walburga Brandner	
B	
M	
D	
Walburga Hockmeier	
B 23/02/1863 Geisenhausen West Germany	
M 1884	
D 17/01/1930 Freising West Germany	
Peter Fuchs	
B	
M	
D	
Maria Fuchs	
B 06/04/1826	
M 04/09/1850	
D 30/05/1884	
Elisabeth Neukan	
B	
M	
D	

Chart no. 1G

Elias Rysta	
B	
M	
D	
Karl (Charles) E. Rysta	
B 26/05/1861 Trondhjem Norway	
M 10/10/1892 Ishpeming Michigan Marquette	
D 15/10/1946 Sioux City Iowa Woodbury Co.	
Lava	
B	
M	
D	
Lava	
B	
M	
D	

Chart no. *1H*

Nils Samuelson Nelson

B Approx. 1866

M

D

Anne Nelson

B 17/01/1871 Kristiansand NORWAY Evjesoken

M 10/10/1892 Ishpeming Michigan Marquette

D 17/01/1963 Sioux City Iowa Woodbury Co.

Ingeborg Oisdatter

B 24/06/1829 Evjesoken Kristiansand Norway

M

D Died prior to 1910 Genesis Tennessee Cal

B

M

D

B

M

D

B

M

D

B

M

D

B

M

D

B

M

D

B

M

D

B

M

D

B

M

D

B

M

D

B

M

D

B

M

D

Chart no. 2

	Stephen Thaddeus Jonas
	B 26/12/1866 Sheboygan Wisconsin Sheboygan
	M 27/08/1907 Randolph Nebraska Cedar Co.
	D 04/12/1934 Omaha Nebraska Douglas Co.
Nalter Vincent Jonas	
B 18/05/1913 Randolph Nebraska Cedar Co.	
M 25/12/1935 Omaha Nebr. Douglas Co. 1st.	Theresia Katherine Wingert
Living Sioux City, Iowa 51106	
	B 29/01/1877 Mt. Carmel Iowa Carroll Co.
	M 27/08/1907 Randolph Nebraska Cedar Co.
	D 21/02/1969 So. Sioux City Nebraska Dako
Richard Vincent Jonas	
B 01/03/1938 Sioux City, IA Woodbury Co. 1st	
M 27/09/1957 Pipestone, Mn. Pipestone Co.	Ignatius John Cressy
Living Sioux City IA 51106	
	B 25/11/1891 Pender Nebraska Thurston Co.
	M 31/12/1914 Hartington Nebraska Cedar Co
	D 10/09/1965 Sioux City Iowa Woodbury Co.
	Althea Louise Cressy
B 08/01/1916 Gross Nebr. Boyd Co.	
M 25/12/1935 Omaha Nebr. Douglas Co. 1st.	Illa Mae Domina
Living Sioux City, Iowa 51106	
	B 21/03/1897 Valley Nebraska Douglas Co.
	M 31/12/1914 Hartington Nebraska Cedar Co
	Living Sioux City, Iowa 51106
Cynthia Louise Jonas	
B 09/07/1959 Sioux City, Iowa	Charles David Crawford
M 10/09/1977 Sioux City, Iowa (Morningside	
Living Bonfield Il. 60913	
	B 19/02/1873 Lima Ohio Allen Co.
	M 04/04/1900 Hawarden Iowa Sioux Co.
	D 19/09/1956 Sioux City, Iowa Woodbury Co
	Harry Franklin Crawford
B 21/04/1903 Hawarden Iowa Sioux County	
M 27/02/1926 Sioux City Iowa Woodbury Co.	Anna Theresia Bultman
D 28/08/1949 Sioux City Iowa Woodbury Co.	
	B 24/07/1885 Pottawattamie Co. Iowa
	M 04/04/1900 Hawarden Iowa Sioux Co.
	D 19/07/1968 Sioux City Iowa Woodbury Co.
Bonnie Minifred Crawford	
B 03/11/1939 Sioux City, Iowa Woodbury Co.	Wallace Raymond Downer
M 27/09/1957 Pipestone, Mn. Pipestone Co.	
Living Sioux City IA 51106	
	B 06/02/1873 Leaf River, Ill. Ugle Co.
	M 01/01/1899 Hawarden, Iowa Sioux Co.
	D 21/10/1944 Sioux City, Iowa Woodbury Co
	Myrtle May Downer
B 05/03/1903 Akron Iowa Plymouth Co.	
M 27/02/1926 Sioux City Iowa Woodbury Co.	Viva Viola Stevens
D 06/04/1964 Sioux City Iowa Woodbury Co.	
	B 09/01/1875 Akron, Iowa Plymouth Co.
	M 01/01/1899 Hawarden, Iowa Sioux Co.
	B 17/02/1949 Sioux City, Ia. Woodbury Co.

SURNAME INDEX - VOL. 20, NO. 2

Aba	4	Carr	4	Dyer	4
Adam	2	Carren	4	Edwards	3
Adams	3	Cemonno	2	Egan	2
Allard	17	Chadwich	2, 3	Eldred	16
Allen	4	Chailisig	4	Enright	5
Almy	4	Chamberlain	4, 14	Ervin	2
Amanzer	4	Chartler	18	Erzinger	5
Amiot	2, 3	Chatfield	4	Fare	3
Anderson	17	Chausser	3	Farmer	2
Andrews	4	Chauvin	2	Farron	5
Archambault	3	Chipman	3	Faslth	4
Aye	2	Choquette	3	Faster	4
Bachelor	2	Cobb	6	Faulkner	3
Bacon	2	Cohaun	2	Fefvre	3
Baker	3	Colomi	3	Fender	4
Balthezar	4	ContanseYY	3	Fife	15
Bap?	3	Cooley	10	Flowers	3
Barcelow	2	Corron	5	Foot	5
Barcolow	17	Corrow	5	Force	2
Barnes	24	Corvil	5	Fore	3
Barnett	2	Courtemanger	3	Fortin	2
Barnla	5	Courtright	3	Francour	3
Bastusil	3	Crawford	28	Fraser	17
Batlett	2	Crerar	6	Free	4
Beardsley	17	Cressy	28	Frechet	4
Beauchamp	11	Crowell	17	Frlsert	3
Beauregard	15	Dagepe	4	Fry	5
Beebe	17	Dahart	4	Fuchs	26
Beedy	3	Dahn	16	Gadbols	3
Beland	5	Dale	16	Gagnon	3, 4
Belanger	2, 4	Dashule	4	Gardner	3
Belcourt	3	Dasling	3	Gates	5
Belgard	3	Daunderand	4	Gauthier	15
Bena	2	Davison	3	Gay	3
Bennett	2, 3, 17	Dayton	2	Gilbert	4
Betz	2	Delamartre	4	Gllkerson	2
Beuchy	4	Dellsle	2	Gilpin	6
Beveridge	18	DePlarce	13	Gonchey	4
Blissett	18	DePezler	2	Goodson	2
Blakesley	2	Deslaurles	IS	Gosselln	16
Bloom	4, 18, 19	Desosalr	4	Gauche:	4
Bockstruck	1	Dewit	3	Goudreau	16
Boisvert	4	Dianne	4	Gould	2
Bonfield	3, 16	Diderplisi	3	Goyette	3, 15, 11
Boprey	5	Dierking	15	Grandmont	2
Boudreau	2, 5	Dlettenhofer	25	Grange	3
Boudreault	3	Dixon	3	Grlganl	2
Bowl	4	Domina	28	Grigsby	5
Brandand	15	Downer	28	Grinnell	15
Brandner	26	Drain	14	Guilford	9
Bray	4	Droille	4	Gumphcey	3
Bregenzer	5	Drolet	12	Hair	4
Breltner	24, 25	Dsolette	4	Hakbusch	3
Bridgell	4	Ducloes	2	Hammen -	3
Bruce	3	Dugay	2	Hammond	2
Bruckmayr	11	Dulin	3	Hanford	2
Buck	2	Duling	3	H a n s o n	2
Bultman	28	Dulude	2	Harding	2
Burch	12	Dumond	2	Harris	4
Burret	4	Durfee	3, 18	Harsh	4
Butler	13	Durham	2, 4	Hawker	4
Butte	3	Dutcher	4	Hawkins	10
Butterfield	2, 3	Dutton	2	Hebert	2, 4
Canada	2	Dycus	4	Hedges	2

Surname Index - Vol. 20, No. 2 (Contd.)

Helier	16	Lesage	2	Pierce	14	Spivey	4
Helsey	13	Leutloff	5	Pineston	4	Spooner	2
Hermann	15	Lewis	4	Plante	3	Sprumont	15
Hess	3	Licht	17	Pollock	2	Stanton	9
Hill	3	Lohman	17	Ponton	3	Starkey	2
Hockmeyer	24, 26	Lontine	2	Potter	15	Stevens	28
Hoebet	16	Look	4, 15, 16	Ppeter	2	Storrs	15
Holabird	6	Love	4	Power	12	Strait	2
Holliman	17	Lowe	3	Radene	15	Stratton	16
Holmes	4	Lwig	15	Ramey	3	Butternon	2
Hope	3	Lynn, Ann	3	Ranney	18	Surprenant	5
Houg	3, 4	Magruder	3, 5	Ray	14	Svan	3
Howe	2	Malloux	17	Raynor	2	Swartwout	16
Hubert	5	Mehi	2	Regnier	4	Sylvester	5
Hulling	4	Marcott	16	Reitz	17	Tell	2
Hulse	14	Martin	4	Reinic	2	Tetreau	4
Hunter	16	Martino	5	Rescoe	2	Thatcher	3
Ingalls	4, 17	Mason	5	Revolc	4	Thayer	3
Ingomire	13	Mayotte	5	Reynolds	2	Thompson	2
Ingha	2	McCabe	4	Richard	4	Tibadoux	4
Ingham	3	McCray	2	Richard	15	Tibaut	5
Irwin	24	McGuffey	2	Richardson	3, 4	Tooc	10
Janno	2	McKee	16	Rhy	4	Vanbuskirk	4
Johnson	2, 3	Mensing	10, 15	Rivard	12	Vanhauser	3
Jonas	28	Herrick	4	Robertard	4	VanVert	5
Jones	2, 3, 24	Hercalf	15	Robinson	4, 16	Vaughn	10
Joubert	4	Hiazer	3	Root	6	Vervais	4
Kakok	16	Richards	10	Rounsavel	10	Vilker	4
Kappen	2	Willier	3, 5	Roush	3	Walton	2, 9
Kaste	15	Hircott	2	Rove	3	Watson	2
Keay	3	Hitterhuber	25	Rudr	2	Way	1
Kellogg	16	Mix	17	Russe	3, 16	Webster	3
Kenega	17	Montgomery	3	Rysta	24	Wells	2, 3
Kiboon	16	Noss	13	Rysta	26	West	3
Knecht	4	Hottley	5	Saindon	4	Whippie	17
Knight	13	Muncey	9	Saindon	2	White	3, 5, 15, 16, 1
Kuntz	16	Munjon	3	Saint	2	Whittemore	4, 17
Labrie	2, 16	Murphy	2	Saltider	4	Wilber	16
Ladd	4	Myers	3	Sanchal	4	Wiley	10
Lafferty	15	Nesher	2	Sanders	3	Wilkinson	3
Lafamme	4	Neaples	13, 14	Sanesac	11	Will	3
Laque	12	Nells	16	Sanfear	4	Williams	10, 18
Lamb	3	Nelson	24, 27	Schneider	17	Wilson	4
Lamieur	3	Neukam	26	Schrott	25	Wingert	28
Lampert	3	Newton	10	Senecy	3	Wolfe	14, 15
Lancaster	5	Nichols	3	Sexton	4	Wood	3
Lanfear	16	Noble	9	Shanbaker	9	Worcester	17
Lanpire	2	Norton	2	Shaw	6	Wright	2
Laplant	4	Nye	4	Shedd	2	Yerces	4
Lapolis	2	O'Connors	16	Shepherd	4	Young	3
Laravise	5	Oladatter	27	Sheppard	5	Zacc	5
Larocque	15	Ostrander	10	Sherman	17	Zann	16
Laroush	4	Ome	14	Sherwin	2		
Lash	10	Palmer	3	Sheriff	9, 10		
Latourno	5	Patterson	3	Shultz	2, 24		
Latrimault	3	Pattow	4	Sicklar	3		
Lavarrice	4	Paulsen	4	Sistler	13		
Lazias	2	Paulsson	17	Skinner	4, 14		
Lebaron	6	Paulison	16	Smedley	2		
LeClasi	4	Pencock	4	Smidtz	2		
Legg	2	Pesue	4	Smith	2, 5, 9		
Leggett	2	Peters	4	Smith	3		
Legris	16	Petrov	3	Snyder	2		
Leonard	2	Phillips	14	Sondraivlett	2		

This index does not include Pages 20 through 23.