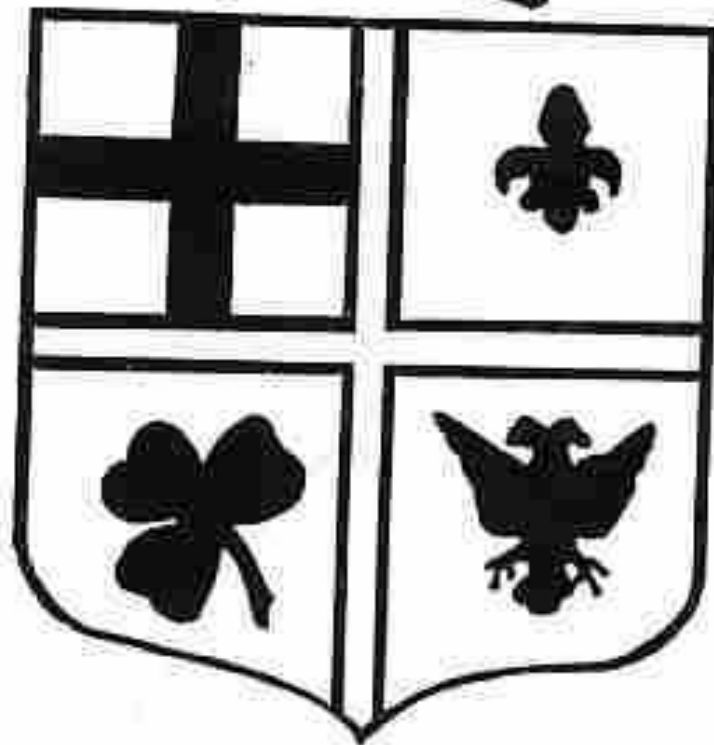


Cherakiki



A QUARTERLY PUBLICATION
OF KANKAKEE VALLEY
GENEALOGICAL SOCIETY

QUARTERLY PUBLICATION

Kankakee Valley Genealogical Society
P . O . Box 442
Bourbonnais, Illinois 60914

August, 1992

Vol. 22, No. 3

TABLE OF CONTENTS

	<u>Page</u>
Quarterly/Newsletter Extractions	2-3
Genealogy Seminars/Trips	4
New Publications	4-6
Family History Services - Moscow, Russia	6
Synopsis of K.V.G.S. Meetings	7
Great & Great, Greats	7 & 9
Kankakee Co. Research	8-9
Past Theakiki Articles	10-11
Quarterly Exchanges	12
1878 Kankakee County Marriages	12
1878 Kankakee County Births	13
County Court - 1878	11-14
Books in Genealogical Room - Kankakee Public Library	15-16
Kankakee County Grave Markers (Maple Grove Cemetery)	17
1917 Prairie Farmer's Directory of Kankakee County	18-26
Ancestor Charts	27-28
Surname Index	29-30

QUARTERLY / NEWSLETTER EXTRACTIONS

German Immigration

A new series of books entitled Germans to America may provide information on German ancestors who entered the U.S. between 1847 and 1897. This series attempts to list German surname immigrants who came to all U.S. ports between 1850 and 1893. Each volume is arranged chronologically by the date of the ship's arrival and gives name of the ship, port of departure, port and date of arrival, list of German passengers with name, age, sex and (when given) occupation, destination, place of origin. A complete name index is at the end of each volume. By the end of 1991 there were 23 volumes available covering the period January 2, 1850 - December 31, 1869. The rest of the series beginning with volume 24 will be used at the rate of 4-6 books per year until the series is complete. Most of the larger genealogical collections have these books. (From Fox Tales Genealogical Society, Naperville, IL)

Ellis Island

In 1992 there will be a computer printout made of information from Ellis Island. The address for information: Statue of Liberty, Ellis Island Foundation, Inc., 52 Vanderbilt Ave., NY, NY 10017-3808 (Eastern W.A. Gen. Society, Oct. 1991).

German Graveyards

Most people going to Germany hope to find their ancestor's grave and tombstone, but unless he is buried in one of the few well-kept, historical cemeteries, you might not find his grave. Space in Germany is at a premium. This includes cemetery space. Families purchase a plat or plots for a certain period of time. Until recently, this was for a period of 25 years, but many towns reduced it to 20 years. After this time, the plot has to be repurchased. Some families keep plots in the family for decades, others do not renew the graves and "let them go". Since embalming is not practiced in German, nothing is left in the grave after 20 or 25 years. The tombstone is removed, usually by the city who resells it, and the grave is resold (Heritage Seekers, North Little Rock, AR, Sept. 1991).

Swiss Research

The Swiss National Tourist Office offers a brochure on "Family Research for Americans of Swiss Descent". It is free and can be obtained by writing them at 608 Fifth Ave., New York, NY 10020 (Family Tree Digest, Oct. 1991).

Archdiocese of Chicago Archives & Records Center

The Archdiocese of Chicago Archives & Records Center is open Monday through Friday from 8:30 a.m. until 4:15 p.m. except on Federal holidays and Catholic holy days. All in person research must be done by appointment only.

Genealogical sacramental records research must be carried on by mail. The Center is located at 5150 Northwest Highway, Chicago, Illinois 60630 (312) 736-5150.

Copies of sacramental certificates prior to 1916 are \$5.00 per copy. Copies of certificates to the person named on the certificate are \$2.00. Records are searched by parish and year. When writing, keep in mind the following:

- 1) Ask for no more than 5 specific persons.
- 2) Designate specific records (such as baptism or marriage).
- 3) Provide complete name of person.
- 4) Provide approximate date to be searched.
- 5) Designate the ethnic group (German, Irish, Polish, etc.).
- 6) Provide the name of the church to be searched. If you do not know the name, provide address for the person.

Sacramental Records and School Records are available through written request. Other available records consist of: Parish Commemorative Books (unrestricted), Deceased Priests Files (restricted), Orphanage Records (restricted), and Archdiocese's Catholic Newspaper on microfilm (unrestricted.)

Pre-1916 sacramental records should soon be available on microfilm at the LDS Family History Libraries in the near future.

Suffixes to German Surnames

Suffixes to German names often contain clues to the regional origin of the surnames:

"bach" from southwest Germany
"burg" throughout Germany
"haus" from Westphalia
"ecke" from Hesse and Thuringia
"ingen" from Baden & Wurttemberg
"inske" from upper Silesia
"ski, zje" from East Pomerania
"reuth" from Bavaria

(Decatur Genealogical Society Newsletter, Jan./Feb., 1992)

Magnetic Photo Albums

Magnetic photo albums are very destructive to photographs. Chemical reaction from the plastic will eventually cause deterioration and discoloration. To remove your photos from the albums, put the album in the refrigerator overnight. When cold, the material separates more easily without damage to the photo. Store photos in albums made of Mylar and acid-free paper.
(Christian Co. Gen. Society Newsletter, May/June, 1992)

GENEALOGY SEMINARS/TRIPS

The German/Eastern Europe Seminar

Sponsored by Heritage Quest, Inc., September 22 through 26, 1992, in Salt Lake City, Utah. The following is a sample of some of the programs: German/American Church Records, German Civil Registration, Mennonite Research, Beginning Latin, Locating German Origins in America, German Sources for Immigration, Polish Genealogy, Belgium/Luxembourg/Netherlands, Sources for Czechoslovakia and Hungary, Research in Switzerland, U.S. Nationalization Records and Jewish Research.

Genealogy Cruise

Arrangements by The Cruise Connection, P.O. Box 299, Interlaken, New York 14847, (607) 532-4204 or (800) 782-9687. For \$1,595 you can cruise aboard the Emerald Seas from New Orleans to the Western Caribbean from November 13-21, 1992. Speakers include Leland Meitzler of Heritage Quest Magazine, Dewayne Lener, a specialist in conservation and preservation of documents and photographs, and Walt Steesy, partner in Heart of the Lakes Publishing.

1630 worldwide Mary & John Conference

Sponsored by Family Society Tours, Ltd., 24 Murray St., Norwalk, CT 06851 in Windsor, Connecticut, from September 22-24, 1993. For additional information contact Don Bergquist (203) 227-8103

Family Tree Passport Travel

This is a full service agency which offers family researchers a unique opportunity to take advantage of the travel industry. For more information about the service, send a SASE to P.O. Box 107, Cowden, IL 62422.

NEW PUBLICATIONS

How to Locate Anyone Who Is or Has Been in the Military

Included in this book are: All military installation in the U.S., Armed Forces World Wide Locations, Military, Patriotic & Veterans Organizations, Military Unit Reunion Associations, Army, Air Force & Fleet Post Offices, U.S. Navy & Coast Guard ships, State Vital Statistics Offices, State Drivers License Offices, State Dept. of Motor Vehicles Offices. \$12.95 plus \$3.05 postage & handling. Mail check to: Military Information Enterprises, P.O. Box 5143, Burlington, NC 27216 (to order by phone, call 1-800-937-2133).

Tidewater Virginia Families

This quarterly magazine of history and genealogy includes the area of Virginia north of the James River and east of the Fall Line represented by the following counties: Caroline, Charles City, Elizabeth City, Essex, Gloucester, Hanover, Henrico, James City, King George, King & Queen, King William, Lancaster, Mathews, Middlesex, New Kent, Northumberland, Richmond, Warwick, Westmoreland and York. Publications will begin with the May-June issue and continue quarterly. \$20.00/year. Mail check to: Tidewater Virginia Families, P.O. Box 876, Urbanna, VA 23175.

Polish Genealogical Society Publications

1. Register of Vital Records of Roman Catholic Parishes from the Region beyond the Bug River (\$6.00).
2. Index to the Obituaries in the Jednosc-Polonia 1926-1946 (\$9.00).
3. A Historical Bibliography of the Histories of Polish Towns, Villages and Regions (\$10.00).
4. The Latin Church in the Polish Commonwealth in 1772 (\$18.00).
5. Index to Polish American Family Biographies (\$2.50).
6. The study of Obituaries as a Source for Polish Genealogical Research (\$9.00).
7. A Book Series - Index to the Obituaries and Death Notices appearing in the Dziennik Chicagoski:
 7. 1890-1899 (over 2,000 listings - \$12.00)
 8. 1900-1909 (over 11,000 listings - \$14.00)
 9. 1910-1919 (over 24,000 listings - \$14.000)
 10. 1920-1929, A-L (over 22,000 listings - \$14.00)
 11. 1920-1929, M-Z (over 22,000 listings - \$14.00)

Mail checks to: Polish Genealogical Society, c/o Marcia Bergman, 926 N. Oxford Lane, Wilmette, IL 60091 (postage and handling costs included in the price of the book).

History of De Kalb County, Indiana

Comprehensive County History in three volumes at \$89/set plus \$6.00 shipping. Mail check to: NATMUS, INC., BOX 686, AUBURN, IN 46706

Sim's West Virginia Land Grants

All land grants given in West Virginia including those bestowed while a part of Virginia (900 pgs.). \$65.00 plus \$4.50 postage & handling. Mail check to: Genealogical Books in Print, 6818 Lois Drive, Suite S, Springfield, VA 22150.

Richard Chamberlaine of Braintree, 1642

Richard Chamberlaine's Norman and English Ancestors and Descendants ca. 865 - 1991 by Welton C. Chamberlain (200 pgs.) \$12.00 Mail check to: Welton Chamberlain, Pickney, MI 48169-0246.

North Carolina Genealogical Society Publications

The North Carolina Genealogical Directory: A Listing of Tar Heel Societies and selected boks for sale by R.S. Spencer, an up-to-date listing of NC Genealogical societies plus title and author of county-level and state-wide genealogical reference books (231 pgs.). \$25.00 postpaid.

Abstracts of Letters of Resignations of Militia Officers in North Carolina 1779-1840 by Timothy Kearney. 1406 numbered entries with numerous other officers mentioned as taken from the NC General Assembly Papers and other sources (144 pgs.). \$20.00 postpaid.

Mail check to: Margaret M. Hofmann, Box 446, Roanoke Rapids, NC 27870.

Pension File Publications

The following publications are available through The National Historical Publishing Co., 209 Greeson Hollow Road, P.O. Box 539, Waynesboro, TN 38485:

Genealogical Abstracts of Revolutionary War Pension Files

- 3 volumes, 4014 pages, \$410.00
- Index to War of 1812 Pension Files 3 volumes, 1887 pages, \$195.00
- Index to Mexican War Pension Files 598 pages, \$65.00
- Register of Florida CSA Pension Applications 278 pages, \$36.00
- Index to Texas CSA Pension Files 519 pages, \$55.00
- Index to Indian Wars Pension Files 1892 - 1926 2 volumes, 1733 pages, \$87.00
- Index to Volunteer Soldiers 1784 - 1811 747 pages, \$32.00
- Index to U.S. Marshals 1789 - 1960 94 pages, \$15.00

* * * * *

FAMILY HISTORY SERVICES - MOSCOW, RUSSIA

We search genealogical and historical materials in Russia, Ukraine, Byelorussia, and all other parts of the former Soviet Union. Our basic rate is \$12/hour plus \$1 per page of photocopies. There is a 50% discount for professional genealogists. To place an order to inquire about specific costs, please write to our U.S. representative: Urbana Technologies, 2011 Silver Ct. E., Urbana, IL 61801.

SYNOPSIS OF K.V.G.S. MEETINGS

The society started January off with the purchase of a new Canon copier. With this copier we've been able to copy church records on site. So far we've been given permission and copied records from Asbury United Methodist Church in Kankakee and Manteno United Methodist Church. Records from both of these churches date back to the 1860's and will be computerized and published by the society.

Transcription of the 1870 Kankakee County Census is progressing nicely and the following townships have been completed: Aroma, Bourbonnais, Ganeer, Limestone, Norton, Otto, Pilot, Rockville and Sumner. The townships of Momence, Essex and Salina are currently being transcribed. We still need volunteers to take the remaining four townships of St. Anne, Kankakee, Manteno and Yellowhead.

The Norton Township Cemetery Book is now available and the Salina Township and Mound Grove Cemetery Books will be available by fall.

The April Meeting at LDS was well attended and very informative. Anyone who hasn't been over to the LDS Church lately needs to make a trip. LDS did make a trip to Kankakee County and microfilmed the Courthouse Birth, Marriage and Death records. These are now available on microfilm and the society purchased a set of these microfilms to be housed at the local LDS Family History Center.

The May Meeting was a cemetery walk of the older sections of Mound Grove Cemetery in Kankakee. Because records were not kept until the 1880's, the society is recording all pre-1900 marker information to be included in the upcoming Mound Grove Cemetery Book.

GREAT & GREAT GREATS

Searching for information on ANNIE (ANNA) HARTMANN, Father FRANK HARTMAN, Mother LOUISE LONGTIN, born 1875, married 30 Jun 1892 to EDWIN EDWARD SANESACK (Senesac) in Kankakee. Edwin Edward Senesac died 1918 and Anna married NICHOLAS BESSE. Edwin Edward Senesac buried in St. Rose Cemetery - Anna and Nick are buried in Mt. Calvary. Where was Anna born and when did she marry Nick? Did she have brothers and sisters? Thelma Lunsford, 524 W. Stockton Heights Dr., Bourbonnais, IL 60914.

* * * * *

Seeking information on JOHATHAN HEWES & ROWENA BAKER HEWES. In 1854, JONATHAN HEWS owned real estate on the following location E 1/4 SW; W 1/4 SE; SE SE section; 8 township; range 14, acres 80 in Momence, Illinois. 1860 census lists Jonathan 59 yrs., Rowene (Ruaun) 57 yrs.; children Irwin 27 yrs., Rhody 22 yrs., Harriet 20 yrs. & George 18 yrs.. Rhoda and Harriet were students at Olivet College Michigan. Harriet taught school during the Civil War. GEORGE BARYON HEWES at 18 joined the 11 Civil War Co. F 8 IL Cavalry. After war, GEWORGE BARYON HEWES married FRANCES MCWHATER. He, his wife and Harriet n 1868 immigrated to California. RHODA HEWES married JOHN TEVERBAUGH of Momence. She died May 27 1878. JONATHAN HEWES immigrated to California ca 1879. ROWENA's death unknown. WILLIAN HEWES, father of Jonathan, and family settled in Crete at Hewesburg. Geraldine Hewes Thompson, 2532 Borton Dr., Santa Barbara, CA 93109.

KANKAKEE COUNTY RESEARCH

I realize it's probably time to let everyone know the extent of research information available in Kankakee County. As many of you know, the Kankakee Public Library has a wonderful genealogy collection. In addition to their vast collection (which we have enumerated in the quarterly), there is a large collection of census microfilms for the State of Illinois. They also have on microfilm copies of the Kankakee newspaper from July of 1854 to the present and of the Momence Reporter from February 12, 1874 to May 20, 1886.

There is also an extensive collection of city directories. The first city directory was in 1876 and was run in issues of the quarterly. The next available directories were as follows: 1896, 1902, 1904, 1911, 1913-14, 1916, 1918, 1919, 1921, 1925-26, 1927, 1931, 1933. From this period on the library appears to have directories for each year.

As far as Courthouse records are concerned, the society has copied all the available early indexes to death, marriage and birth records. These records can be obtained from the Kankakee County Clerk, 450 E. Court St., Kankakee, IL 60901 at a cost of \$5.00 per record.

County Clerk records are available as follows:

Marriages -	Book 1	1853 - 1901
	Book 2	9102 - 1916
Deaths		1877 - 1916
Births -	Book 1	1878 - 1886
	Book 2	1887 - 1896
	Book 3	1896 - 1903
	Book 4	1904
	Book 5	1905 - 1907

Also available at the Courthouse are Naturalization Records. These can be obtained by writing to the Circuit Clerk, 450 E. Court St., Kankakee, IL 60901 and including \$1.00 for the first page and \$.50 for all additional pages. The indexes to Naturalization Records were run in the early volumes of the quarterly.

If you are looking for information in the Grant Park area, the following information is available at the Grant Park Library, 107 W. Taylor:

- Historical Encyclopedia of Illinois & History of Kankakee Co., Vol. 2
- Town Histories from 1833 - 1976
- Methodist Church History 1838-1976
- St. Paul's Lutheran Church, Petersburg 1868-1976
- Zion Lutheran Church, Sollitt 1872-1976
- Sherburnville Christian Church 1840-1876
- Our Redeemer Evangelical Lutheran Church 1963-1976
- St. Peter's United Church of Christ 1860-1976
- Union Corners Cemetery
- L'Hommedieu Genealogy, Vol. 1 & 2

If you are looking for information in the Momence area, the following information is available at the Momence Public Library, 126 Locust St.:

- Microfilms of Momence Progress Reporter 1874 - 1992
- Lamport Family History
- Smith & Phillips Family History
- Templeton & Allied Families
- Lester Taylor Cascading Pedigree
- Martin O'Donnell Sr. & Mary McDonahoug Family History
- Meinzer Family Tree 1812 - 1986
- Momence: The Making of a River Town 1834 - 1984

If you are searching for families in the southeastern part of the county, two good sources of information are the S/S Peter & Paul Parish History and the Herscher Centennial Book (both at Kankakee Library).

* * * * *

GREAT AND GREAT, GREATS

Need information on FRANK SCHERRER (SCHEER?) b. 9 Aug 1825 at Unterfingunford, Canton Aagau, Switzerland, md. MARGARETA ELIZABETH REITZ LAUMANN b. 1836 at Darmstadt, Hesse, Germany on Jan 1, 1867, in will Co. Moved to California by wagon before 1880 with son JOHN LAUMANN b. 1856 at Peotone, IL. Daughters remained in Illinois; MARGARETA md. JOHN KURTZ, ELIZABETH md. JACOB GROSS.

Also need information on wagon train to California ca. 1858-60 including LAWRENCE (LORENZ) LAUMANN b. Germany 1830, wife MARGARETA ELIZABETH REITZ LAUMANN b. Germany 1836, with son JOHN b. 1856 Peotone, dau. ELIZABETH b. 1858 in CA. Widow and children returned to Illinois where she married FRANK SCHERER in 1867. Need parentage on all three sides. UNA LAUMANN, 10025 E1 Camino Real #41, Atascadero, CA 93422.

* * * * *

Need information on EDWARDINA PICARD born 1873 possibly in Illinois. Father ISADORE PICARD and Mother MARIE CADIEUX came from and returned to Canada. MARJORIE ELLIOTT, 895 N. Center St., Tracy, MN 56175

* * * * *

PAST THEAKIKI ARTICLES

Over the years, the society has run much valuable information in our quarterly, Theakiki. Below you will find a synopsis of articles from the first 21 volumes and the quarterlies they appeared in:

<u>Article</u>	<u>Volume</u>
Kankakee Co. Courthouse Naturalization Records	1 #1 thru 4 #4
1860 Kankakee Co. Census - Otto Township	7 #3
Ganeer Township	9 #2
Momence Township	10 #4
Aroma Township	11 #4
Rockville Township	13 #2
Norton Township	14 #3
Church Histories - First Presbyterian, Kankakee	2 #1
or Information St. Mark United Methodist, Kankakee	1 #2
United Church of Christ, Chebanse	2 #2
St. John's Lutheran, Cullom	2 #4
St. Mary's Church, Beaverville	3 #2
St. Patrick Parish, 1893-1943	3 #3
St. John's United Church, Grant Park	4 #3
Roster of St. Peter's Confirm. Classes	4 #3
St. Mary of Immaculate Conception Church	19 #2
Sunday School of St. Paul's Church	19 #2
Our Sunday Schools	16 #4
The New Catholic Church	17 #2
1883 Atlas - Aroma Township	1 #2
Bourbonnais Township	1 #2
Essex Township	2 #1
Ganeer Township	2 #1
Kankakee Township	2 #3
1917 Prairie Farmers Directory of Iroquois County	2 #2 thru 9 #1
1917 Prairie Farmers Directory of Kankakee County	18 #1 thru 22 #3
1876 Kankakee City Directory	13 #2 thru 17 #3
Military Records - Civil War Veteran Burials	6 #4
The Roll of Battle Abbey	10 #2
Military Records in the Old Northwest	12 #4
Annual Role Call of the Dead	15 #1-2
Pension List	17 #1
Report of the Adjutant General, Vol. IV	18 #4 thru 19 #1
1834/35 Civil War Veteran Deaths	21 #3
Township Histories - Kankakee	2 #3
Chebanse	3 #4
Momence	4 #4

Past Theakiki Articles (Contd.)

Marriage Records - St. Patrick's Church	1 #1
Marriage Licenses for 1867	6 #2
1867 Marriage Announcements	8 #3
Kankakee Co. Marriage Book A	1 #1 & 20 #2-3
1868 Kankakee Gazette	16 #2
1869 Kankakee Gazette	16 #3
1870 Kankakee Gazette	16 #3
1871 Kankakee Gazette	16 #4
1872 Kankakee Gazette	16 #4
1873 Kankakee Gazette	17 #1
1874 Kankakee Gazette	17 #1
1875 Kankakee Gazette	17 #2
1876 Kankakee Gazette	19 #3
1877 Kankakee Gazette	19 #4
Death Records -	
1900 & 1901 Kankakee Gazette	16 #1
1901 Kankakee Gazette	16 #1
1868/69 Kankakee Gazette	16 #2
1870 Kankakee Gazette	16 #2
1871 & 1872 Kankakee Gazette	16 #3
1873 & 1874 Kankakee Gazette	17 #1
1875 Kankakee Gazette	17 #2
1876 Kankakee Gazette	19 #3
1877 Kankakee Gazette	20 #1
1878 Kankakee Gazette	21 #4
County Court -	
1873 Kankakee Gazette	16 #4
1874 Kankakee Gazette	17 #1 thru 17 #4
1875 Kankakee Gazette	17 #4 thru 19 #3
1876 Kankakee Gazette	19 #4 thru 20 #3
1877 Kankakee Gazette	20 #4 thru 21 #2
1878 Kankakee Gazette	21 #3 thru
The Optimist - Kankakee High School Graduates 1872-1905	20 #4 thru 21 #2
Informational -	
Recording Oral Histories	16 #1
Canadian Vital Records Update	16 #2
Bourbonnais; or The Early French Settlement in Kankakee Co.	18 #1 & 18 #2
Kankakee County Facts	18 #4
Family Data Sheet	18 #4
Cemetery Restoration	21 #1
Kankakee Co. Public Library Hours	21 #4
Miscellaneous -	
1908 Bourbonnais Township Assessment List	12 #4 thru 13 #1
Township Officers for 1874	17 #1
The Ice Harvest	17 #3
Real Estate Transactions - 1875	18 #1 thru 18 #4
The Fourteen Orphans	19 #3
1878 Kankakee Co. Physicians	21 #3

QUARTERLY EXCHANGES

Effective this year, we are exchanging quarterlies with two new societies, Southwest Oklahoma Genealogical Society and Michigan Habitat Heritage. We have also exchange publications with Southwest Oklahoma Genealogical Society and the following publications have been added to our collection:

1917 Census of the Comanche Indian Tribe of Kiowa Agency.
Anadarko. Oklahoma

Census of the Comanche Tribe of Indiana. Kiowa Indian Agency

Index of Deaths 1905 to 1917. Lawton Constitution Newspaper,
Lawton, Oklahoma

1910 Township Maps of Southwest Oklahoma

Index to Applications for Registration for Homestead Entry
within the Kiowa, Comanche & Apache Ceded Lands

Kiowa Agency Mission Schools of Oklahoma 1881-1914

One Hundred ancestral Charts, Volume 1 through 4

1878 KANKAKEE COUNTY MARRIAGES

Taken from The Kankakee Gazette.

<u>Bride</u>	<u>Groom</u>	<u>Where From</u>	<u>Date</u>
Mary E. Driscoll	J. W. Smith	Lowell, IN/Grant Park	26 May 1878
Anna M. Jones	Felix G. Buck	Momence	01 Jun 1878
Lillie H. Whouten	Samuel C. Elsbery	Essex	05 Jun 1878
Alvira Duncan	Jefferson Davis	Salina	05 Jun 1878
Alice C. Burton	Charles E. McGrew	Aroma/Kankakee	06 Jun 1878
Barbara Tschill	John Zopf	Kankakee	10 Jun 1878
Denise Deneau	John B. Cyrier	Bourbonnais	02 Jun 1878
Jenoir Gregoir	Levi Dandurand	Bourb./Rockville	20 May 1878
Maggie M. A. Etter	Edward Coutier	Panna/Kankakee	13 Jun 1878
Maggie Godfrey	Edward Lynch	Kankakee	28 May 1878
Mary L. Trowbridge	John K. H. Sammis	Mexico NJ/Spencer IN	18 Jun 1878
Carrie G. Tupper	Frank W. Buell	Kankakee/Waukegan	18 Jun 1878
Melvina Simpson	Benj. Girard	Kankakee	23 Jun 1878
Amasie Lambert	Zepherin Cyrier	Bourbonnais	17 Jun 1878
Ellen Neview	Christopher Shambo	Kankakee/Pilot	30 Jun 1878

1878 KANKAKEE COUNTY BIRTHS

<u>Son/Dau.</u>	<u>Parents</u>	<u>Date</u>
Son	Michael & Rosa Kowkowski, Momence	01 Apr 1878
Son	Fred & Elizabeth Rahmanop, Kankakee	25 Apr 1878
Son	August & Minnie Pankow, Grant	26 Apr 1878
Son	Henry & Susan Whitehouse, Rockville	23 Apr 1878
Son	F. S. & Jennie Van Veghten, Sumner	28 Apr 1878
Daughter	Wm. H. & Aurilla Blessing, Manteno	28 Apr 1878
Daughter	D. & Mary Ernferdt, Kankakee	? Apr 1878
Daughter	Fred & Mary Peters, Otto	? Apr 1878
Daughter	Henry & Helen Miller, Momence	? 1878
Son	John & Kate Cox, Ganer	19 May 1878
Daughter	James & Mary Skenk, Momence	11 May 1878
San	Julius & Mary Lenoux, Momence	30 Apr 1878
Son	Wm. & Elizabeth Brant, Yellowhead	14 May 1878
Daughter	F. H. & Ida Bauermeister, Yellowhead	12 May 1878
Daughter	Wm. & Matilda Ponto, Yellowhead	08 Apr 1878
Daughter	Herman & Sophis Junker, Yellowhead	05 Jun 1878
Son	Moses & Mary Bachand, St. Anne	21 May 1878
Son	Isaac & Sophia Giasson, Aroma	20 May 1878
Daughter	Calice & Ozene Loselle, Aroma	31 May 1878
Son	Hubert & Cathrine Lapage, St. Anne	05 May 1878
Daughter	W. W. & Hattie Janery, Kankakee	22 May 1878
Son	Mike & Barbara Steinbach, Kankakee	24 Jun 1878
Son	Wm. & Soffie Kramer, Kankakee	26 May 1878
Son	Noel & Evelina Guertin, St. Anne	26 May 1878

COUNTY COURT - 1878

Taken from The Kankakee Gazette June 6, 1878.

Application for judgment on delinquent valuation. Judgment against alt others as prayed.

Objection of Robert Hawkins to

Geo. K. Ott vs. Wm. Frith; election contest overruled. Continued to June term.

Demurrer to petition; demurrer

Geo. W. Rice vs. Edwin R. Kendall: election contest. Same order.

Estate John B. Caron. Final report approved.

Guardianship John H. Lane, minor. New bond approved and J. P. Stratton, former bondsman, discharged.

Estate Z. C. Brayton. Additional inventory approved; new bond approved and former bondsmen discharged. Petition to remove administrator and administratrix denied.

Estate Asa M. Preston. Claims allowed: G. W. Londen, X14.60; Chas. Hall, \$84.34; W. H. Watson, \$27.15; J. R. Easton, \$21.02; Jas. Porch, \$31.76; J. M. Devilling, \$6.

Estate A. E. Davis. Report approved.

Estate Z. C. Brayton. Rule on applicant to file more specific informaton on his petition to adjudicate claim of Jeffrys.

Estate Reuben Futnam. Petition to sell real estate. Case continued.

Estate Mauritz Look. Final report approved and administrator discharged.

Estate Francis Marcotte. Same order.

Estate Simon Russell. Same order.

Estate J. B. Cyrier. Leave to Christian Stravlow to withdraw and against estate. Claims allowed: M. F. Bachant, X316.94; Cape & Chase, \$82.05.

Andrew Wiley was adjudged insane.

Whitehill J. W. Mitchell. Claims allowed: Jahn F. Filch, \$56.50; Wilber & Strunk, \$26.51; James Schram, \$4.65; Chas. Holt, \$16.50; Wm. N. Graham. \$2.75; John Davis, \$23.50; Jacob Ruger, \$3.75; G. S. Blakesley, \$3.91; J. J. Mogg, \$7; H. B. Hall, \$2.15; Clark Olds, \$9.30.

Final certificate of naturalization issued to Andrew Melby.

Estate Linden Thurber. Final report approved and administrator discharged.

Estate I. N. Dickson. Will admitted to record.

Taken from The Kankakee Gazette, June 27, 1878.

Estate of John Whitehall. Claims allowed; B. G. Lee, for tombstone, \$62.60 John Deerson, \$4.37.

Taken from The Kankakee Gazete, June 17, 1878 (should have been July 4).

Geo. K. att vs. Wm. Frith; election contest. Motion by defendant to dismiss for want of bonds for costs; motion allowed, and case dismissed.

Estate of A. S. McKee. Appraisement bill, adm'rs relinquishment and selection, inventory and report of sale approved. Claims allowed: John G. Knecht, \$29.50.

Estate Wm. C. Richards. Administrator granted leave to compound doubtful claims and sell.

Geo. Rice vs. E. R. Kendall: election contest. Continued to next term.

BOOKS IN GENEALOGICAL ROOM - KANKAKEE PUBLIC LIBRARY

Section 7 (Yellow) - Ethnic Materials (continued from vol. 22 #2)

Wellauer, Maralyn; "Record Keeping and Archives in West German" Roots, Inc., 1987.

Wust, Klaus; "Virginia Germans" University Press of Virginia, 1969.

Wyman, Mark; "Immigrants in the Valley: Irish, Germans, and Americans in the upper Mississippi Country, 1830-1860" Nelson-Hall, 1984.

HISPANIC:

Ryskamp, George R.; "Tracing your Hispanic Heritage" Hispanic Family History Research, 1984.

HUGUENOT:

Franklin, Charles; "Huguenot Genealogical Research" 1985 (2 copies).

HUNGARIAN:

Suess, Jared H.; "Handy Guide to Hungarian Genealogical Records" Everton Publ., 1980.

IRISH:

Elliott, Bruce; "Irish Migrants in the Canadas" McGill-Queen's University Press, 1988.

Flannery, John Brendan; "Irish Texans" University of Texas Institute of Texan Cultures, 1980.

"Irish Passenger Lists, 1847-1871: a list of passengers sailing from Londonderry to America on ships of the J & J Cooke Line and the McCorkell Line" Compiled by Brian Mitchell, Genealogical Publishing, 1988.

"Land Owners in Ireland" Genealogical Publication Co., 1988.

McCay, Betty L.; "Irish Research and Sources" 1972.

Ryan, James G.; "Irish Records" Ancestry Inc., 1988.

ITALIAN:

Belfiglio, Cavalier Valentine; "Italian Experience in Texas" Eakin Press, 1983.

Preece, Phyllis Pastore; "Handy Guide to Genealogical Records" Everton Publ. 1978.

JEWISH:

Berent, Irwin M.; "Jewish Genealogy" Garland Publ. Co., 1984.

Sack, Sallyan Amdur; "Guide to Jewish Genealogical Research in Israel" Genealogical Publ. Co., 1987.

NORWEGIAN:

"Beginner's Guide to Norwegian Genealogical Research" Compiled by Finn A. Thomsen; Thomsen's Genealogical Center, 1984.

Stangland, E. C.; "Tracing Your Norwegian Roots" Stangland Norse Press.

Wellauer, Maralyn A.; "Tracing your Norwegian Roots" 1979.

PALATINES:

"Book of names especially relating to the early Palatines and the first settlers in the Mohawk Valley" Genealogical Publ. Co., 1969.

POLISH:

Baker, T. Lindsay; "Polish Texans" University of Texas Institute of Texan Cultures, 1982.

Gnacinski, Jan and Len; "Polish and Proud; Tracing your Polish Ancestry" Ye Olde Genealogie Shoppe, 1983.

QUAKER:

Berry, Ellen; "Our Quaker Ancestors" Genealogical Publ. Co., 1987.

Hodgson, William; "Select Historical Memoirs of the Religious Society of Friends" 1844.

SCOTTISH:

Moncreiffe, Sir Iain; "Bartholomews Clan Map of Scotland of Old".

Moncreiff, Iain; "The Highland Clans" Clarkson N. Potter, Inc., 1982.

"Scottish Family Histories" Compiled by Joan P.S. Ferguson; assisted by Dennis Smith and Peter Wellburn. 2nd Edition. National Library of Scotland, 1986.

SHAKERS:

Hutton, Daniel Mac-Hir; "Old Shakertown and the Shakers" Harrodsburg Herald Press, 1936.

.....to be continued



Rev. Chr. Danner, born Nov. 2, 1841, died Sept. 16, 1909
 Anna Mary Danner, born May 5, 1858, died Oct. 21, 1898



Father David Hertz, born in Burks Co., Penn.
 Feb. 23, 1810, died Oct. 3, 1903



Albert N. Hertz, Nov. 19, 1867 - Apr. 12, 1871



Adam Walter, born April 29, 1806, Died Mar. 7, 1881

FARMERS AND BREEDERS, KANKAKEE COUNTY

PRAIRIE FARMER'S RELIABLE DIRECTORY

KANKAKEE COUNTY SUPERVISORS

Term Expires

Name	Township	Postoffice	Term Expires
William Harris	Yellowhead	Grant Park	1918
William Kahney	Summer	Grant Park	1918
Thomas Parker	Manteno	Manteno	1918
P. H. Keigher	Rockville	Manteno, R1	1918
W. W. Parish, Jr.	Momence	Momence	1918
Charles B. Astle	Ganecr	Momence	1919
F. F. Marcotte	Rourhonnais	Bradley	1919
A. G. Goepper	Limestone	Kankakee, R2	1919
George M. Wagner	Salina	Bonfield	1919
Charles F. Skinner	Essex	Essex	1918
Stephen Wyatt	Penbrooke	St. Anne, R4	1919
Walter A. Guertin	St. Anne	St. Anne, R2	1919
William Byrns	Aroma	St. Anne, R2	1918
Frank J. Hennessy	Otto	Chebanse	1919
Gust Berger	Pilot	Herschler	1919
J. Frank Hoster	Norton	Buckingham	1918
E. A. Jeffers	Kankakee	Kankakee	1918
Albert Schneider	Kankakee	Kankakee	1918
Louis E. Beckman	Kankakee	Kankakee	1918
Edward A. Lecour	Kankakee	Kankakee	1919
A. C. Beardsley	Kankakee	Kankakee	1919
Victor McBroom	Kankakee	Kankakee	1919
Harry L. Topping	Kankakee	Kankakee	1919

KANKAKEE COUNTY OFFICERS

County Judge	Jay H. Merrill
County Clerk	Louis Breault
County Treasurer	C. E. Robinson
State's Attorney	W. H. Dyer
Circuit Clerk	C. B. Sawyer
Sheriff	A. C. Bothfuhr
Superintendent of Schools	S. D. Saltzgiver
Coroner	L. E. Fenouille
Surveyor	L. C. Looker
Master-in-Chancery	H. F. Ruel
Public Administrator	Alex. J. Powell
Superintendent of Poor Farm	A. N. Gathany
Court Reporter	Will C. Schneider
County Stenographer	Myrtle Sylvester
County Superintendent of Highways	F. M. Enos
Agricultural Advisor	J. S. Collier
FINANCE—L. E. Beckman, E. A. Lecour, W. A. Guertin, W. Wyatt, A. Lecour, W. A. Guertin, W. Wyatt, BUILDINGS AND GROUNDS—E. A. Lecour, W. A. Guertin, W. Wyatt, BERGER, F. F. Marcotte, H. Topping, Albert Schneider, BRIDGES—Gust Berger, M. Wagner, E. Beckman, E. A. Jeffers, Stephen Wyatt, CLAIMS—Charles Astle, F. J. Hennessy, I. E. Beckman, F. A. Goepper, ALBERT SCHNEIDER, COUNTY CLERK—H. L. Topping, A. G. Goepper, A. C. Beardsley, Thomas Parker, F. F. Marcotte, F. F. Hennessy, E. A. Jeffers, A. C. Beardsley, COUNTY FARM—J. F. Hoster, E. A. Jeffers, A. C. Beardsley, William Kahney, CIRCULATIONS—F. A. Jeffers, Thomas Parker, G. M. Wagner, ELECTIONS—F. A. Jeffers, Thomas Parker, W. Harris, P. H. Keigher, ERRORS AND ABATEMENTS—William Byrns, W. Harris, P. H. Keigher, PUBLIC HIGHWAYS—F. J. Hennessy, Charles Astle, H. L. Topping, J. F. Hoster, Victor McBroom, PURCHASING—Victor McBroom, Charles Astle, J. F. Hoster, SALARIES—F. F. Marcotte, E. A. Lecour, W. A. Guertin, W. Wyatt, SHERIFF—G. M. Wagner, W. A. Guertin, W. W. Parish, SUPERINTENDENT OF SCHOOLS—Thomas Parker, William Byrns, F. H. Keigher, TREASURER—Stephen Wyatt, F. J. Hennessy, William Kahney.	

GESTATION TABLE OF FARM ANIMALS

Time of Service	Mares, 340 Days	Cows, 283 Days	Ewes, 150 Days	Sows, 112 Days	Bitches, 63 Days
Jan. 1	Dec. 1	Oct. 10	May 30	Apr. 22	Mar. 9
" 6	" 16	" 15	June 4	" 27	" 14
" 11	" 21	" 20	" 9	May 2	" 19
" 16	" 26	" 25	" 14	" 7	" 24
" 21	" 31	Nov. 4	" 19	" 12	" 29
" 26	Jan. 5	" 9	" 24	" 17	Apr. 1
" 31	Jan. 10	" 14	July 4	June 1	" 6
Feb. 5	" 15	" 19	" 9	" 6	" 11
" 10	" 20	" 24	" 14	" 11	" 16
" 15	" 25	" 29	" 19	" 16	" 21
" 20	" 30	Dec. 4	" 24	" 21	" 26
" 25	Feb. 4	" 9	" 29	" 26	May 3
" 30	" 14	" 14	Aug. 3	" 31	" 8
Mar. 7	" 19	" 19	" 8	July 6	" 13
" 12	" 24	" 24	" 13	" 11	" 18
" 17	" 29	" 29	" 18	" 16	" 23
" 22	Jan. 3	" 3	" 23	" 21	" 28
" 27	Jan. 8	" 8	" 28	" 26	June 2
Apr. 1	Mar. 1	" 13	Sept. 2	" 31	" 7
" 6	" 6	" 18	" 7	Aug. 5	" 12
" 11	" 11	" 23	" 12	" 10	" 17
" 16	" 16	" 28	" 17	" 15	" 22
" 21	" 21	Mar. 9	" 22	" 20	" 27
" 26	" 26	" 14	" 27	" 25	Aug. 1
" 31	May 5	" 19	Nov. 1	" 30	" 6
June 5	" 15	" 24	" 6	" 35	" 11
" 10	" 20	" 29	" 11	Oct. 4	" 16
" 15	" 25	" 3	" 16	" 9	" 21
" 20	" 30	Apr. 8	" 21	" 14	" 26
" 25	June 4	" 13	" 26	" 19	" 31
" 30	June 9	" 18	Dec. 1	" 24	Sept. 10
July 5	" 14	" 23	" 6	" 29	" 15
" 10	" 19	" 28	" 11	Nov. 3	" 20
" 15	" 24	" 3	" 16	" 8	" 25
" 20	" 29	May 8	" 21	" 13	" 30
" 25	July 4	" 13	" 26	" 18	Oct. 5
" 30	" 9	" 18	Jan. 10	" 23	" 10
Aug. 4	" 14	" 23	" 15	" 28	" 15
" 9	" 19	" 28	" 20	Dec. 3	" 20
" 14	" 24	June 7	" 25	" 8	" 25
" 19	" 29	" 12	" 30	" 13	" 30
" 24	Aug. 8	" 17	Jan. 10	" 18	Nov. 4
" 29	" 13	" 22	" 15	" 23	" 9
Sept. 29	" 18	" 27	" 20	" 28	" 14
" 8	" 23	July 7	" 25	" 33	" 19
" 13	" 28	" 12	Feb. 9	" 38	" 24
" 18	" 33	" 17	" 14	" 43	" 29
" 23	Oct. 7	" 22	" 19	Feb. 1	" 34
" 28	" 12	" 27	" 24	" 6	" 39
Oct. 3	" 17	" 32	Mar. 1	" 11	" 44
" 8	" 22	" 37	" 6	" 16	" 49
" 13	" 27	Aug. 1	" 11	" 21	" 54
" 18	" 32	" 6	" 16	" 26	" 59
" 23	Oct. 7	" 11	" 21	" 31	Jun. 3
" 28	" 12	" 16	" 26	" 36	" 8
Nov. 2	" 17	" 21	Apr. 10	" 41	" 13
" 7	" 22	" 26	" 15	" 46	" 18
" 12	" 27	Sept. 10	" 20	" 51	" 23
" 17	" 32	" 15	" 25	" 56	" 28
" 22	Nov. 1	" 20	" 30	" 61	" 33
" 27	" 6	" 25	May 10	" 66	" 38
Dec. 2	" 11	" 30	" 15	" 71	" 43
" 7	" 16	Sept. 10	" 20	" 76	" 48
" 12	" 21	" 15	" 25	" 81	" 53
" 17	" 26	" 20	" 30	" 86	" 58
" 22	" 31	Oct. 1	" 35	" 91	" 63
" 27	Dec. 1	" 6	May 1	" 96	" 68
" 31	" 5	" 11	" 6	" 101	" 72

MARTIN'S PHARMACY

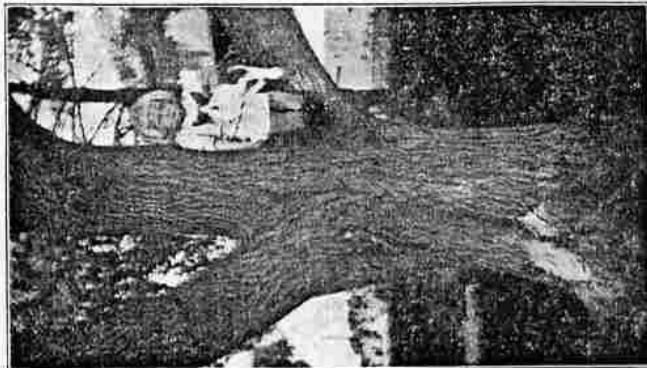
The Rexall Store
252 Court St., East

KANKAKEE, ILLINOIS

WORMS
Cause 90% of all Your Live Stock Losses

You can stop your losses—destroy the worms. Best and cheapest conditioner and digestive; costs only 1/3 of a cent a day for each hog or sheep;—1/2 of a cent for each horse or head of cattle. Stock doctor themselves with

A Med-icated Stock Salt.
SALOVET Sold on a Guarantee.



Hazel Webster and her kitten
Kankakee County, Ill.
Hazel is a product of W. O. Webster's
Duroc Jersey Farm

GLUE METHOD OF INOCULATION

By Frank I. Mann in Prairie Farmer.

The glue method of inoculating clover and alfalfa seed is not only cheap and easy, but it is nearly "fool proof," that is, it is not necessary to be very particular about all the details to have it successful in its results. A pound of glue may be dissolved in a gallon of water or in two or three gallons of water, without any appreciable difference in the results; and a quart of dry dirt, or a gallon of dry dirt, may be sprinkled on the seed after it has been moistened with the glue water. As a rule, about a quart of dirt may stick to the seed, and the rest of the dirt may be screened out or not, just as you prefer, as the amount of dirt is not material, if there is enough. In preparing the dirt, however, a little care should be used to secure it from a place where the bacteria are active, as shown by the nodules formed, and if the host plant, in this case sweet clover, has grown in the same place for several years the inoculation will be better. This dirt should not be dried in the sun, as direct sunlight is fatal to bacteria of nearly every kind. The dirt should be finely pulverized and sifted through a fine sieve, but this is not much trouble, as so small an amount is used.

When a farmer can employ a competent graduate veterinarian at reasonable expense it always is best to do so, and in all serious cases such expert help should be used even if the expense will be considerable. Unfortunately it is not always possible to find such an expert or he may live at such a distance that an ordinary or trivial case will not warrant the expense of his employment, or the nearest veterinarian may not be a properly qualified practitioner, or is one in whom the stockman has no confidence.

For these reasons every owner of animals should keep some simple remedies on hand, and these are necessary even on farms where professional assistance can readily be had. It should be understood, however, that the untrained farmer should not attempt the administration of strong poisons, alkaloids and many preparations used hypodermically by a graduate veterinarian. Such preparations are extremely dangerous in the hands of the layman and are liable to do much more harm than good. The trained surgeon also should be depended upon for all major operations.

A cupboard may be set apart for storing medicines in a cool, dry place and where freezing will not occur in winter. A glass graduate and scales will be necessary for measuring and weighing medicines. Powdered drugs should be kept in tightly closed glass fruit jars and should be plainly labeled. They may soon lose their strength if exposed to the air. Poisons should be kept on a separate part of a shelf partitioned off for the purpose and away from simple, harmless drugs. Ointments, with the exception of fly blister, should be made up fresh at time of use. Liniment may be prepared and kept indefinitely if well corked.

The medicine case should also have a special division in which to keep a few instruments, bandages, suture silk

and absorbent cotton; or better still, these may be kept in a handbag for immediate use as required. The emergency bag should contain a roll of absorbent cotton, several rolled three-yard bandages of unbleached muslin in strips three inches wide, a pound or two of oakum, a spool of strong suture silk, half a dozen suture needles of assorted shapes and sizes, most of them large; a half-ounce, short-barreled, strong-nozzled hard rubber syringe, a two-ounce metal syringe, a cow trocar and canula, for tapping a bloated animal, a pair of curved shears, a combination operating knife containing a curved bistoury, a probe pointed bistoury and a strong straight scalpel, a few milking tubes and a teat bistoury, an artery forceps, metal probe, castrating knife and pair of horse clippers.

These will suffice, but there are many other useful instruments such as a clinical thermometer, horse troicar, catheter and dentistry "float," which may be added from time to time. Some of the medicines to be listed later may also have a place in the emergency kit or bag, notably those needed for the treatment of wounds, and at hand should be a strong quart drenching bottle and ten feet of quarter-inch cotton rope with which to hold up a horse's head for drenching. A veterinary force pump is added on a large farm, but its place may be taken by three feet of new lawn sprinkling hose fitted with a large tin funnel. This is used to give a horse or cow a rectal injection. There should also be a six-foot piece of new half-inch rubber tubing for use in giving a cow or mare a vaginal injection.

Simple necessary medicines may best be listed under the following special heads:

Physics.

Epsom and Glauber Salts. Average dose for an adult cow, one pound in

three pints of warm water. Dose for a horse, 12 ounces.

Castor Oil. Especially useful for young animals. Dose for a calf or foal, from 1 to 6 tablespoonfuls shaken up in milk.

Raw Linseed Oil (not boiled, which is poisonous). Average dose, one pint for constipation and to follow a dose of colic medicine, or contain medicine for colic.

Barbados Aloes (freshly powdered). Average dose, one ounce, to be given to an adult horse as a "physic ball."

Wound Medicines.

Keep in stock one pint each of carbolic acid and coal tar disinfectant and a gallon can of the latter for dipping and disinfecting purposes. Two teaspoonfuls to a pint of water ordinarily makes a sufficiently strong solution. Bleeding is stopped by applying Monsell's solution of iron on oakum or cotton batting, or applying Monsell's powder. As a wound lotion also keep on hand a mixture of one ounce of sugar of lead and six drams of sulphate of zinc in one pint of water. This is called "white lotion" and should be plainly labeled "poison" and well shaken before use.

Dusting Powders.

A dusting powder of equal parts of slacked lime, charcoal and sulphur is useful for application to surface wounds and sores. Boracic acid also is needed and a little iodoform may be added to keep flies away.

Liniments.

Keep on hand a pint (pound) each of turpentine and aqua ammonia. One ounce each of these mixed with a pint of soft water, in which two raw eggs have been shaken up and the mixture left for 24 hours, will make a good stimulating liniment; or one ounce of each may be mixed with 6 to 14 ounces of raw linseed oil to make a very strong or comparatively mild liniment.

Lotions.

"White lotion" for wounds has already been mentioned. Equal quantities of lime water and raw linseed oil make "carron oil," an excellent lotion for burns. Two to four ounces of Goulard's extract and one to two ounces of glycerine in one quart of

soft water form a useful lotion for scratches and mud fever of itchiness and "gumminess" of the legs. A good lotion for inflammation of the udder is made by mixing together one part each of fluid extracts of poke root and belladonna leaves and one part of turpentine with five parts of sweet oil, melted lard or camphorated oil. It is made weaker or stronger as required. Anodyne lotion for painful swellings is made by combining equal quantities of tinctures of opium, aconite, belladonna and druggists' soap liniment. A small quantity of chloroform may be added. Mouth lotion consists of an ounce of powdered borax or alum in a quart of soft water; eye lotion of half a dram each of sulphate of zinc and fluid extract of belladonna in a quart of soft water.

Tonics.

Fowler's solution of arsenic is a good general tonic for rundown, thin, hidebound horses and those afflicted with chronic skin diseases or heaves (broken wind). The average dose is half an ounce (one tablespoonful) given night and morning until one quart has been given. The medicine may then be gradually discontinued, taking at least a week to the work. Dried sulphate of iron (copperas), dose one dram night and morning, is another good tonic, commonly combined with an equal dose of ground gentian root or ginger root, nuxvomica, salpeter and fenugreek as a condition powder. The dose is one tablespoonful of the combination of drugs mixed in the feed night and morning for ten days. Omit sulphate of iron for pregnant animals. Nux is poisonous and must therefore be given with care. It is most useful as a nerve tonic and appetizer.

Colic Medicines.

Keep in stock one pound each of laudanum (dose, 1 to 2 ounces); essence of ginger root (dose, 1 to 2 drams); sulphuric acid (dose, 1/2 to 1 ounce); turpentine (dose, 1 to 2 ounces); granular hyposulphite of soda (dose, 1 to 4 ounces). A dose of each of the first three medicines in a pint of water containing two ounces of hyposulphite of soda will prove effective for most colics. Two ounces of turpentine in a pint of raw linseed oil may be given for "wind" (flatulent)

colic, or following the other medicine when the pain of "cramp" (spasmodic) colic has subsided.

Fever Medicines.

Powdered saltpeter is an important drug for animals. It is given in the fever of influenza, founder (laminitis) or lymphangitis (milk leg, also for stocking of the legs and other large swellings). A dram is the average dose. Give it every four or six hours with tonics as a condition powder, and in double doses for founder or milk leg. Do not give it in colt distemper, when abscesses are forming. It may often be administered in drinking water or a bran mash or damp feed. It also is given in tablespoonful doses once or twice daily for garget of the cow. Beware of aconite often given for fever. It is too dangerous a poison to be safely used by anyone other than a trained doctor.

Blister.

An effective blistering ointment is made by melting together three parts of lard and one-quarter part of finely shaved yellow beeswax, and then stirring in one part of powdered caustic (Spanish fly). Stir in a tin dish until cold, then store in a capped glass fruit jar. It improves with age. When using this blister clip off the hair, wash the skin clean, dry it perfectly. Tie the horse up short in his stall, rub the blister in for fifteen minutes and then smear on some more blister. Wash the blister off in 48 hours and then apply a little lard daily. Do not cover a blistered part, or rub it on the loins, or on top of the hips, or use it after a poultice, or on irritated skin, or in very hot or cold weather.

Absorbents.

Never be without tincture of iodine to swab on swollen glands, tumors, forming abscesses, bony growths, capped or puffed joints, indolent sores or wounds, canker of the mouth in pigs and ringworm spots. It also is useful to inject into abscesses, fistula and lump jaw cavities. Iodine ointment is made by mixing one dram each of iodine crystals and iodide of potash in one ounce of lard. This is used on swellings, sore necks and shoulders, puffs of all sorts, tumors,

forming abscesses, ringworm spots and enlargements of the udder. As an absorbent blister rub up one dram of biniodide of mercury with two ounces of the fly blister already mentioned and use on bony growths, such as splints and ringbone, callouses, indolent sores, tumors of the udder.

Worm Medicines.

Gasoline is kept on most farms and in tablespoonful doses in six ounces of milk is the best remedy for stomach worms in sheep. Lambs take less in proportion. Two ounces of turpentine in a pint of raw linseed oil is effective as a starting dose for a "wormy horse." Follow with worm powders composed of equal parts of salt, sulphur and dried sulphate of iron. Dose, one tablespoonful night and morning for a week, then skip ten days and repeat. Omit iron for pregnant animals. For worms of swine give one teaspoonful of turpentine in slop for three consecutive days for each eighty pounds of body weight; or one dram of dried sulphate of iron in slop for five successive mornings for each hundred pounds of body weight. Where swine are known to be seriously infested with worms, give eight grains of santonin and five grains of calomel in a little slop for each hundred pounds of body weight. Divide the pigs into lots of five and give the medicine in a little slop after starving the animals for eighteen hours. Care must be taken to give only the doses here prescribed, else damage may be done.

Disinfectants.

In the paragraph on wound medicines it has been advised to keep carbolic acid and coal tar disinfectant in stock. To these may be added formaldehyde, bichloride of mercury tablets and permanganate of potash crystals. In disinfecting a stable a solution of four or five ounces of formaldehyde to the gallon, or a 1-1,000 of bichloride of mercury (corrosive sublimate) or a 1-30 solution of carbolic acid or coal tar disinfectant should be used after a thorough cleaning of the premises. For wounds a 1-1,000 solution of corrosive sublimate also is the most effective disinfectant and a 1-500 solution should be used for disinfecting when a spore-forming germ, like that of anthrax, is present.

ent. Permanganate of potash is a useful mild disinfectant (antiseptic and deodorizer) in a 1-5,000 to a 1-50 solution. The weaker solution is used lukewarm for vaginal injection purposes, while the 2 per cent solution is useful for injection into cavities from which come bad-smelling discharges and for swabbing sores (cankers) of the mouth. As a wound lotion it is usual to employ a 2 to 5 per cent solution of carbolic acid, or lysol, or coal tar disinfectant. Carbolic acid is also much used as an internal disinfectant in contagious abortion. Two drams of the acid is well diluted with water and mixed in soft feed for each pregnant cow every other night throughout pregnancy. Peroxide of hydrogen one part and clean water two or three parts is a popular disinfectant for cleansing foul wounds.

Scour Medicines.

The farm medicine chest would not be completely stocked without some remedies for diarrhoea or scours. A mixture of one part of salol and two parts of bismuth (first prescribed years ago, by the writer) has become a standard remedy among farmers. The average dose is one teaspoonful given two or three times a day and washed down with milk or water. The dose may be doubled in bad cases and for larger calves and foals. Prepared chalk, powdered alum, sulphur, powdered catechu, rhubarb and ginger root are also much used for diarrhoea.

Administering Medicines.

Small doses of liquid medicine, such as the average two-ounce dose of a fever medicine or tonic solution, are best given by means of a half-ounce hard rubber syringe. Expert veterinarians sometimes give such medicines or bad-tasting drugs in gelatine capsules, or in form of a "ball." Worm, condition and tonic powders are mixed in damp grain feed. A large dose of liquid medicine is termed a "drench," and is given from a strong, long-necked bottle. A few inches of rubber hose may be fitted on the neck of such a bottle.

To drench a horse, back him into a stall, place a running noose of soft, small cotton rope or "clothes line" upon the upper incisor teeth, under the upper lip, and draw the noose tight, with the knot of the rope in

the front. Throw the loose end of the rope across an overhead beam, raise the horse's head, hold it there by means of the rope and pour the medicine into the mouth a little at a time until all is swallowed. Do not squeeze the throat of the horse when giving medicine and never pour the medicine into the nostril. If the horse will not swallow, pour a teaspoonful of cold water into a nostril and swallowing will instantly occur.

To drench a cow, place her in a stallion or tie her in a stall. Walk up on her right side (milking side). Pass the left hand across her face and into her mouth. Hold her head in a straight line forward and slightly elevated, not turned to one side. Pour the medicine very slowly into the right side of the mouth. Let the head down instantly if the medicine causes the cow (or horse) to cough. Fluid given too fast passes into the paunch and is practically wasted. Administered slowly, it largely goes to the third and fourth stomachs and absorption takes place in the latter.

Sheep have to be very carefully drenched from a bottle to avoid choking. Swine take medicine through a hole cut in the toe of an old shoe thrust into the mouth or from a short, strong rubber hose fitted in the neck of a strong bottle. Dogs take medicine in capsules inserted in meat or from a bottle or spoon emptied into a pouch formed of the lip and cheek.

Avoid "doping" animals unnecessarily. Medicine should only be given when the animal is sick, should be the right medicine, and is best prescribed by an expert.

VALUE OF LABOR

The United States Department of Agriculture found in 1855 that it required four hours and 34 minutes of human labor to produce a bushel of corn. At the Minnesota experiment station it has been found recently that 45 minutes of human labor is about the average time required for the same work. In other words, human labor is worth six times as much as it was 60 years ago, due to the use of better machinery, better varieties of corn and better soil management.

Index

Breeders' Directory of Kankakee County.....99-113

Business Directory of Kankakee County.....116-191

Farmers' Directory of Kankakee County.....19-98

General Farm Data for Kankakee County..... 192

General Information:

 Gestation Table of Farm Animals..... 199

 Glue Method of Inoculation..... 200

 Kankakee County Officers..... 198

 Labor, Value of..... 204

 Livestock Farmers' Medicine Chest..... 201

 Soil and Crop Association of Kankakee County..... 8

 United States Officers..... 196

 Young Men's Country Club of Kankakee County..... 15

Make Your Country Home More Beautiful

While you are enjoying the benefits of modern machinery and labor-saving devices do not forget the advantages of decorating your home. Shade and fruit trees properly planted will give you almost humble country place a distinguished appearance and will enhance the value of your property by many hundreds of dollars. We want to show you just how we would make these improvements for you. Write or phone and we will call.

Offices 309-10 Cobb Building

Phone Bell 1578 or 219

THE KANKAKEE NURSERY, Kankakee, Ill.

GET YOUR BUSINESS TRAINING AT

BROWN'S BUSINESS COLLEGE

"The School of Results"

STUDENTS MAY ENROLL AT ANY TIME

M. M. Gallagher, Principle : KANKAKEE, ILLINOIS

Bell Phone 1635

Pilkinds
EXCLUSIVE CLOAK, SUIT & MILLINERY SHOP.

136 South
East Avenue
KANKAKEE,
ILLINOIS

Bear in Mind the Parcel Post Delivery Brings Our Merchandise to Your Door
There is a reason why our Farm Trade is increasing every month—

We Stand for QUALITY, STYLE and PRICE

F. A. LOTTINVILLE
Shoe Dealer

ALL NEW IDEAS IN

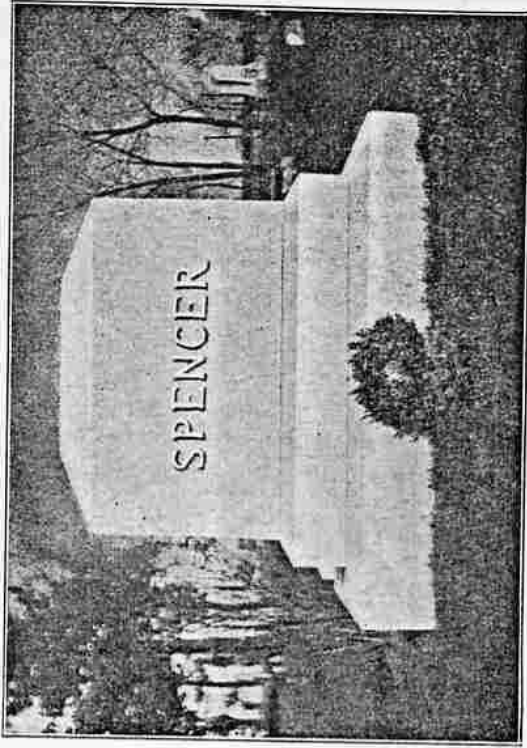
FASHIONABLE FOOTWEAR

Independent Telephone 472

We Do Repairing

162 Court Street

KANKAKEE, ILLINOIS



Erected by us in Mound Grove Cemetery

LET us presume you are about to buy a monument. Plainly speaking, you know nothing about monuments. They have not been your business. "I want a beautiful monument that will stand for all time," you say to yourself as you step into a monument store. In a vague and rather general way you know what you want, but you do not know exactly how to select it. A monument is no ordinary purchase. You realize this and it makes you all the more conscious of the fact that, to a large extent, you must look to the man in the store to advise you in your choice. If it is a good monument store, he knows.

OUR REPUTATION IS YOUR PROTECTION

Northern Illinois Granite Company

ALBERT C. TANNER, President and Manager
KANKAKEE, ILL.

Office and Shop
Entrance to Mound Grove Cemetery
Ind. Phone 43, Bell 1878

Plant Equipped
With the Latest Improved
Machinery

1917 PRAIRIE FARMER'S DIRECTORY OF KANKAKEE CO. FEMALE SURNAME INDEX

NAME	DIR. PAGE	VOLUME	PAGE	NAME	DIR. PAGE	VOLUME	PAGE
Schreffler, Dora B.	48	18 #4	16	Sheehan, Nora	69	19 #2	16
Schreffler, Mabel	33	18 #2	18	Shelly, Bertha	73	19 #2	18
Schriber, Amelia	20	18 #1	21	Shelly, Vida	77	19 #2	20
Schrik, Grace	98	19 #4	18	Shelton, Beulah	39	18 #3	13
Schroeder, Dora	57	18 #4	20	Sherwood, Lenora	36	18 #3	12
Schroeder, Ella	57	18 #4	20	Sherwood, Maud	32	18 #2	18
Schroeder, Louise	81	19 #3	13	Sherwood, Nellie	48	18 #4	16
Schroeder, Mary	26	18 #2	16	Shillington, Carrie A.	97	19 #4	17
Schroeder, Minnie	48	18 #4	16	Shimmin, Cleo	35	18 #2	19
Schroth, Freda	54	18 #4	19	Shipp, Susan	96	19 #4	17
Schubee, Lydia	57	18 #4	20	Sholtz, Louisa	29	18 #2	16
Schubert, Theresa	42	18 #3	15	Shomer, Margaret	21	18 #1	21
Schulte, Theresa	20	18 #1	21	Shoup, Emma G.	28	18 #2	16
Schultz, Alvena	47	18 #3	17	Shreffler, Laura	23	18 #1	22
Schultz, Bertha	47	18 #3	17	Shreffler, Mary E.	79	19 #3	12
Schultz, Emma	22	18 #1	22	Shreffler, Vada	67	19 #1	21
Schultz, Florence	83	19 #3	14	Shreotel, Mary	90	19 #3	18
Schultz, Freda	79	19 #3	12	Shristena, Kate	57	18 #4	20
Schultz, Gusta	82	19 #3	14	Shumen, Emma	69	19 #2	16
Schultz, Ida	65	19 #1	20	Siebert, Alma	59	18 #4	21
Schultz, Louisa	53	18 #4	18	Siedentop, Marie	32	18 #2	18
Schultz, Mary	50	18 #4	17	Siemering, Louise	21	18 #1	21
Schumake, Ada	34	18 #2	19	Sifling, Susan	76	19 #2	20
Schuncke, Alma	61	19 #1	18	Simington, Flora	72	19 #2	18
Schutte, Rosa	88	19 #3	17	Simonds, Cora	71	19 #2	17
Schwager, Sophia	23	18 #1	22	Singleman, Augusta	84	19 #3	15
Schwark, Clara	72	19 #2	18	Sinn, Mamie	98	19 #4	18
Schwartz, Mary	33	18 #2	18	Sipple, Adeline	36	18 #3	12
Schwichtenberg, Bertha	50	18 #4	17	Sirois, Flossie	29	18 #2	16
Swochert, Rosa	63	19 #1	19	Skelly, Mary	64	19 #1	20
Coshman, Annie	43	18 #3	15	Slager, Maggie	89	19 #3	17
Cott, Ruth	59	18 #4	21	Slinghey, Nettie	74	19 #2	19
Cuffhom, Elizabeth	52	18 #4	18	Smiley, Leah	65	19 #1	20
Ceager, Elizabeth M.	97	19 #4	17	Smiley, Mary	24	18 #2	14
Ceedorf, Emelie	80	19 #3	13	Smith, Alma	21	18 #1	21
Ceedorf, Martha	80	19 #3	13	Smith, Anna	31	18 #2	17
Ceedorf, Mary	62	19 #1	19	Smith, Carrie	84	19 #3	15
Ceek, Carry	70	19 #2	17	Smith, Eliza	73	19 #2	18
Ceek, Emma	70	19 #2	17	Smith, Ida	62	19 #1	19
Ceek, Loise	81	19 #3	13	Smith, Lillian	75	19 #2	19
Ceibert, Ernestine	94	19 #4	16	Smith, Lucille	87	19 #3	16
Ceitz, Mae	81	19 #3	13	Smith, Marguerite	93	19 #3	19
Ceitz, Mae	81	19 #3	13	Smith, Martha	52	18 #4	18
Ceitz, Minnie	55	18 #4	19	Smith, Minnie	94	19 #4	16
Ceiwert, Catherine	23	18 #1	22	Smityman, Alice	36	18 #3	12
Celig, Hattie	62	19 #1	19	Snag, Anna	20	18 #1	21
Cenesac, Emma	60	19 #1	18	Snelcon, Mary	78	19 #3	12
Cenesac, Leah	80	19 #3	13	Snyder, Della	50	18 #4	17
Cenesac, Loretta	62	19 #1	19	Snyder, Della	77	19 #2	20
Cenesac, Rosalie	89	19 #3	17	Snyder, Hazel	40	18 #3	14
Cexton, Luellen	95	19 #4	16	Snyder, Mabel	94	19 #4	16
Caffer, Jennie E.	75	19 #2	19	Snyder, Sayra	77	19 #2	20
Cane, Lilly	23	18 #1	22	Sorensen, Inger	63	19 #1	19
Carkey, Ida	95	19 #4	18	Sorensen, Carrie	54	18 #4	19
Cayer, Leah	34	18 #2	19	Soucie, Delia	33	18 #2	18
Ceehan, Bridget	37	18 #3	12	Soucy, Bella	91	19 #3	18
Ceehan, Edna S.	34	18 #2	19	Soucy, Bertha	58	18 #4	21
Ceehan, Johanna	71	19 #2	17	Soucy, Odile	23	18 #1	22
Ceehan, Margaret	40	18 #3	14	Spencer, Hattie	32	18 #2	18

NAME	DIR. PAGE	VOLUME	PAGE	NAME	DIR. PAGE	VOLUME	PAGE
Billane, Kate	51	18 #4	17	Studer, Louisa	67	19 #1	21
Bivey, Emma	73	19 #2	18	Studer, Mary	67	19 #1	21
Bivey, Minnie	48	18 #4	16	Styck, Anna	73	19 #2	18
Brague, Lizzie	92	19 #3	19	Styck, May	85	19 #3	15
Brimont, Arthense	33	18 #2	18	Styck, Rosa	88	19 #3	17
Brimont, Blanche	47	18 #3	17	Suemiel, Lena	70	19 #2	17
Brimont, Della	57	18 #4	20	Sumner, Mary	72	19 #2	18
Brimont, Fabiola	62	19 #1	19	Swank, Hettie	52	18 #4	18
B. Aubin, Saraphine	46	18 #3	17	Swartz, Anna	57	18 #4	20
B. Aubin, Victoria	38	18 #3	13	Swartz, Lillie	42	18 #3	15
B. Germain, Elmira	66	19 #1	21	Sweeney, Mae	83	19 #3	14
B. Germain, Rose	66	19 #1	21	Sweeson, Sophia	41	18 #3	14
B. German, Mina	27	18 #2	15	Swigert, Mary	93	19 #3	19
B. John, Anna	55	18 #4	19	Swords, Leona	98	19 #4	18
B. Pierre, Emma	59	18 #4	21	Tabio, Una	23	18 #1	22
B. Pierre, Exilda	31	18 #2	17	Tamanick, Pauline	92	19 #3	19
B. Pierre, Laurina	64	19 #1	20	Tamblyn, Elizabeth	64	19 #1	20
B. Pierre, Maria	83	19 #3	14	Tamblyn, Louise	20	18 #1	21
B. Pierre, Pearl	38	18 #3	13	Tammen, Anna	58	18 #4	21
Badt, Lena	52	18 #4	18	Tavares, Mary	44	18 #3	16
Balwood, Jane	37	18 #3	12	Taylor, Alice	61	19 #1	18
Banley, Helen	95	19 #4	16	Taylor, Mary	97	19 #4	17
Barssburg, Annie	47	18 #3	17	Taylor, Minnie	85	19 #3	15
Bay, Laura	60	19 #1	18	Templeton, Emily	68	19 #2	16
Beel, Lulu	31	18 #2	17	Tetrault, Margaret	56	18 #4	20
Beeko, Mary	24	18 #2	14	Tetter, Nellie	36	18 #3	12
Behr, Dora	26	18 #2	15	Thavis, Anna	96	19 #4	17
Behr, Hilda	46	18 #3	17	Theide, Anna	83	19 #3	14
Belling, Elizabeth	20	18 #1	21	Thibault, Lucille	34	18 #2	19
Bephen, Hazel	21	18 #1	21	Thiede, Dora	88	19 #3	17
Bephenson, Emma	95	19 #4	16	Thiel, Bertha	37	18 #3	12
Berling, Tillie	47	18 #3	17	Thiel, Clara S.	37	18 #3	12
Betson, Mae	47	18 #3	17	Thies, Gertrude	67	19 #1	21
Bevens, Effie E.	46	18 #3	17	Thompson, Alvina	43	18 #3	15
Bevens, Jennie	64	19 #1	20	Thompson, Eliza	31	18 #2	17
Bevens, Jennie	64	19 #1	20	Thorsen, Carrie	74	19 #2	19
Bevens, Lavina	64	19 #1	20	Thorsen, Emma	97	19 #4	17
Bick, Elizabeth	51	18 #4	17	Thorsen, Nellie	73	19 #2	18
Bick, Lillie	66	19 #1	21	Thorsen, Ruth	73	19 #2	18
Bienart, Frances	88	19 #3	17	Thurber, Lucella	86	19 #3	16
Birling, Agatha	21	18 #1	21	Thurston, Emma	63	19 #1	19
Bith, Daisy	42	18 #3	15	Thurston, Faye	53	18 #4	18
Bockdale, Eugenie	78	19 #3	12	Thurston, Georgia	85	19 #3	15
Bockton, Jean	73	19 #2	18	Thurston, Mabel	91	19 #3	18
Boeven, Emma	79	19 #3	12	Tilbury, Hattie	38	18 #3	13
Boeven, Katie	22	18 #1	22	Tilden, Louise	70	19 #2	17
Boleanbach, Lizzie	82	19 #3	14	Timmerman, Lizzie	72	19 #2	18
Boner, Eva	67	19 #1	21	Tirppo, Loise	81	19 #3	13
Bowell, Ruby	74	19 #2	19	Tobenski, Cora	20	18 #1	21
Brastner, Lyril	44	18 #3	16	Tolsma, Minnie	85	19 #3	15
Brausa, Emma	45	18 #3	16	Tongeran, Mary	85	19 #3	15
Bream, Helen	52	18 #4	18	Towney, Agnes	81	19 #3	13
Brester, Jennie	35	18 #2	19	Townsley, Ida	49	18 #4	16
Brickler, Ella	57	18 #4	20	Tramm, Mary	72	19 #2	18
Broud, Anna	43	18 #3	15	Tremblay, Eva	36	18 #3	12
Broud, Esther	93	19 #3	19	Tremblay, Lydia	90	19 #3	18
Brum, Maggie	62	19 #1	19	Trobaugh, Grace	49	18 #4	16
Brupel, Delphena	78	19 #3	12	Trudeau, Aldea	76	19 #2	20
Buart, Blanche	86	19 #3	16	Trudeau, Victoria	87	19 #3	16

NAME	DIR. PAGE	VOLUME	PAGE	NAME	DIR. PAGE	VOLUME	PAGE
Trudel, Emma	45	18 #3	16	Wagner, Anna	90	19 #3	18
Tubbs, Melissa	20	18 #1	21	Wagner, Elizabeth	67	19 #1	21
Turner, Josephine	89	19 #3	17	Wagner, Ella	56	18 #4	20
Turudeav, Herlmine	27	18 #2	15	Wagner, Emma	61	19 #1	18
Tyler, Clara	38	18 #3	13	Wagner, Lillian	44	18 #3	16
Udwal, Grace	25	18 #2	14	Wagner, Tena	40	18 #3	14
Unru, Lulu	55	18 #4	19	Wakeman, Nellie	94	19 #4	16
Unz, Alice	46	18 #3	17	Wakman, Minnie	24	18 #2	14
Unz, Emma	27	18 #2	15	Waldhauser, Minnie	25	18 #2	14
Unz, Mabel	26	18 #2	15	Walgenback	81	19 #3	13
Unz, Nellie	26	18 #2	15	Walker, Florence	69	19 #2	16
Upton, Katie	70	19 #2	17	Walker, Kate	96	19 #4	17
Uran, Lula	28	18 #2	16	Wallace, Cora	49	18 #4	16
Uoldershof, Bourvina	38	18 #3	13	Wallace, Florence	60	19 #1	18
Vacca, Minnie	52	18 #4	18	Walsh, Bridget	38	18 #3	13
Vadboncoeur, Cora	80	19 #3	13	Walton, Nellie	48	18 #4	16
Vaddornseur, Annie	26	18 #2	15	Ward, Alta	77	19 #2	20
Vagt, Mary	39	18 #3	13	Ward, Ethel M.	48	18 #4	16
Vagt, Rosa	59	18 #4	21	Ward, Eva	38	18 #3	13
Vail, Birdie	65	19 #1	20	Ward, Laura	89	19 #3	17
Vail, Myrtle	41	18 #3	14	Warmbir, Emelie	85	19 #3	15
Vallencourt, Sarah	23	18 #1	22	Warner, Carrie	24	18 #2	14
Van Alven, Lucy	67	19 #1	21	Warner, Jennie	52	18 #4	18
Van Kanen, Alice	56	18 #4	20	Warner, Julia	78	19 #3	12
Van Voorst, Pearl	33	18 #2	18	Warner, Louisa	72	19 #2	18
Vanderhyden, Helen	27	18 #2	15	Warner, Sophia	46	18 #3	17
Vandermeer, Ida	61	19 #1	18	Warren, Alice	67	19 #1	21
Vandermeer, Rose	93	19 #3	19	Washburn, Mattie	69	19 #2	18
Vandewort, Marguerite	42	18 #3	15	Washer, Augusta	22	18 #1	22
Vane, Stella	84	19 #3	15	Watters, Anna	73	19 #2	18
VanNeste, Anna F.	81	19 #3	13	Waymire, Effie	86	19 #3	16
Vanneste, Nellie	92	19 #3	19	Weber, Anna	29	18 #2	16
VanRanishort, Nellie	95	19 #4	16	Weber, Anna	47	18 #3	17
Ventlone, Emma	50	18 #4	17	Weber, Emma	37	18 #3	12
Versaille, Cora	43	18 #3	15	Weber, Lela	60	19 #1	18
Vickers, Grace B.	32	18 #2	18	Weber, Minnie	61	19 #1	18
Vickery, Beatrice	79	19 #3	12	Webster, Viola	35	18 #2	19
Vickery, Ethel	56	18 #4	20	Wehling, Alvena	29	18 #2	16
Vickery, Jennie	50	18 #4	17	Weigel, Elvina	63	19 #1	19
Vickery, Mabel	40	18 #3	14	Weiler, Anna	39	18 #3	13
Victor, Stella	30	18 #2	17	Weinlader, Kate R.	66	19 #1	21
Vigneault, Maria Ange	41	18 #3	14	Weinmann, Ruth	40	18 #3	14
Villeneuve, Lillie	25	18 #2	14	Weise, Mary	22	18 #1	22
Vincent, Mary	42	18 #3	15	Weiske, Amelia	69	19 #2	16
Vining, Emma	98	19 #4	18	Welsh, Hazel	82	19 #3	14
Vining, Etta	80	19 #3	13	Wemstron, Cora	70	19 #2	17
Vining, Winifred	72	19 #2	18	Wendle, Lina	42	18 #3	15
Vinning, Abbie	70	19 #2	17	Wendt, Tenna	70	19 #2	17
Voigt, Carrie	24	18 #2	14	Wepprecht, Jessie	85	19 #3	15
Volkens, Bertha	74	19 #2	19	Wepprecht, Kate	82	19 #3	14
Vollmar, Charlotte K.	20	18 #1	21	Werner, Emma	50	18 #4	17
Volsen, Mary	63	19 #1	19	West, Theresa	45	18 #3	16
Vonderbruegge, Josephine	61	19 #1	18	Westenfelt, Mamie	47	18 #3	17
Voss, Cornelia	89	19 #3	17	Westerhoff, Tinney	81	19 #3	13
Vrolyk, Annie	79	19 #3	12	Wetmore, Lucy	21	18 #1	21
Vroom, Lucy	77	19 #2	20	Whaley, Florence	57	18 #4	20
Vroom, Minnie	94	19 #4	16	Wheeler, Elizabeth	23	18 #1	22
Wade, Jennie	98	19 #4	18	Wheeler, Geraldine	27	18 #2	15
Wadleigh, Ora	26	18 #2	15	Wheeler, Mary	37	18 #3	12

NAME	DIR. PAGE	VOLUME	PAGE
Whitaar, Jennie	58	18 #4	21
White, Gladys	41	18 #3	14
White, Laura	51	18 #4	17
White, Sarah	76	19 #2	20
Wierer, Ida	62	19 #1	19
Wiggenhauser, Anna	82	19 #3	14
Wilde, Mary	49	18 #4	16
Williams, Alice	27	18 #2	15
Wilken, Anna	81	19 #3	13
Wilken, Anna	81	19 #3	13
Wilken, Dena	51	18 #4	17
Wilken, Minnie	39	18 #3	13
Wille, Emma	51	18 #4	17
Willhelm, Elisabeth	58	18 #4	21
Williams, Elize	48	18 #4	16
Williams, Florence	83	19 #3	14
Williams, Ivy	98	19 #4	18
Williams, Johanna	49	18 #4	16
Willie, Caroline	59	18 #4	21
Wills, Tilda	80	19 #3	13
Wilson, Alice	70	19 #2	17
Wilson, Blanche	39	18 #3	13
Wilson, Nellie	71	19 #2	17
Wilson, Ollie	61	19 #1	18
Wilson, Rose	46	18 #3	17
Wingarter, Dorothy	61	19 #1	18
Wingert, Emma	93	19 #3	19
Wingert, Esther	54	18 #4	19
Wingarter, Edith	52	18 #4	18
Winterroth, Bertha	50	18 #4	17
Winterroth, Eva	70	19 #2	17
Winterroth, Lena	51	18 #4	17
Winterroth, Mary	51	18 #4	17
Winzelman, Pauline	49	18 #4	16
Witheft, Lizzie	60	19 #1	18
Witt, Amelia	80	19 #3	13
Witthans, Carrie	83	19 #1	19
Wittie, Anna M.	41	18 #3	14
Wittie, Sophie	83	19 #3	14
Woeltje, Anna	43	18 #3	15
Woeltje, Minnie	39	18 #3	13
Wolf, Emma	93	19 #3	19
Wolf, Hattie	37	18 #3	12
Woore, Lillie	21	18 #1	21
Wright, Carrie P.	86	19 #3	16
Wright, Dora	59	18 #4	21
Wright, Gail	96	19 #4	17
Wright, Margaret	91	19 #3	18
Wruck, Louise	23	18 #1	22
Wulfe, Martha	76	19 #2	20
Wulffe, Elizabeth	39	18 #3	13
Wunderlich, Emma	96	19 #4	17
Wylie, Catherine	91	19 #3	18
Wylie, Maggie	40	18 #3	14
Yeadicke, Alta	50	18 #4	17
Yeates, Edith	50	18 #4	17
Yerno, Rosie	74	19 #2	19
Yoder, Ruth	43	18 #3	15
Yonke, Lizzie	81	19 #3	13

NAME	DIR. PAGE	VOLUME	PAGE
Yonker, Grace	70	19 #2	17
Yonker, Ida	81	19 #3	13
Yost, Lydia	94	19 #4	16
Young	45	18 #3	16
Young, Luella	80	19 #3	13
Young, Mary	38	18 #3	13
Young, Mary	77	19 #2	20
Youngloe, Edith	74	19 #2	19
Zace, Josephine	64	19 #1	20
Zartman, Bertha A.	49	18 #4	16
Zeims, Augusta	82	19 #3	14
Zilman, Florence	29	18 #2	16
Zimmerman, Anna	79	19 #3	12
Zimmerman, Arnstine	47	18 #3	17
Zimmerman, Emma	86	19 #3	16
Zimmerman, Mary	43	18 #3	15
Zimmerman, Mary	90	19 #3	18
Zoph, Josephine	98	19 #4	18
Zwart, Fannie	51	18 #4	17

THE END

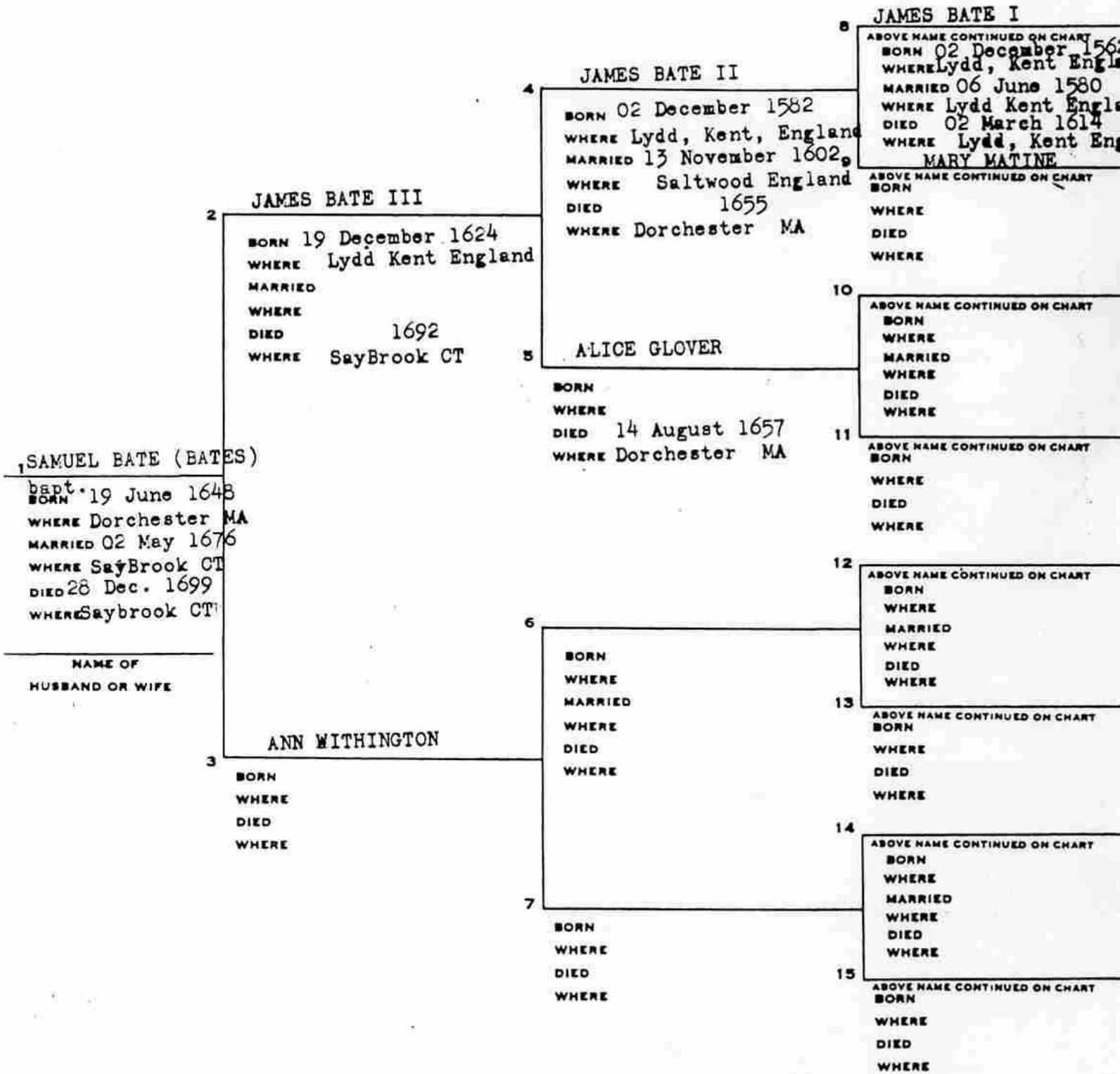
Compiler
 SHARLA BATES GROSSO
 4594-A W.Rt.17
 Kankakee, Ill. 60901

PEDIGREE CHART

CHART NO. 04

NO. 1 ON THIS CHART IS
 THE SAME PERSON AS NO. 08

ON CHART NO. 03



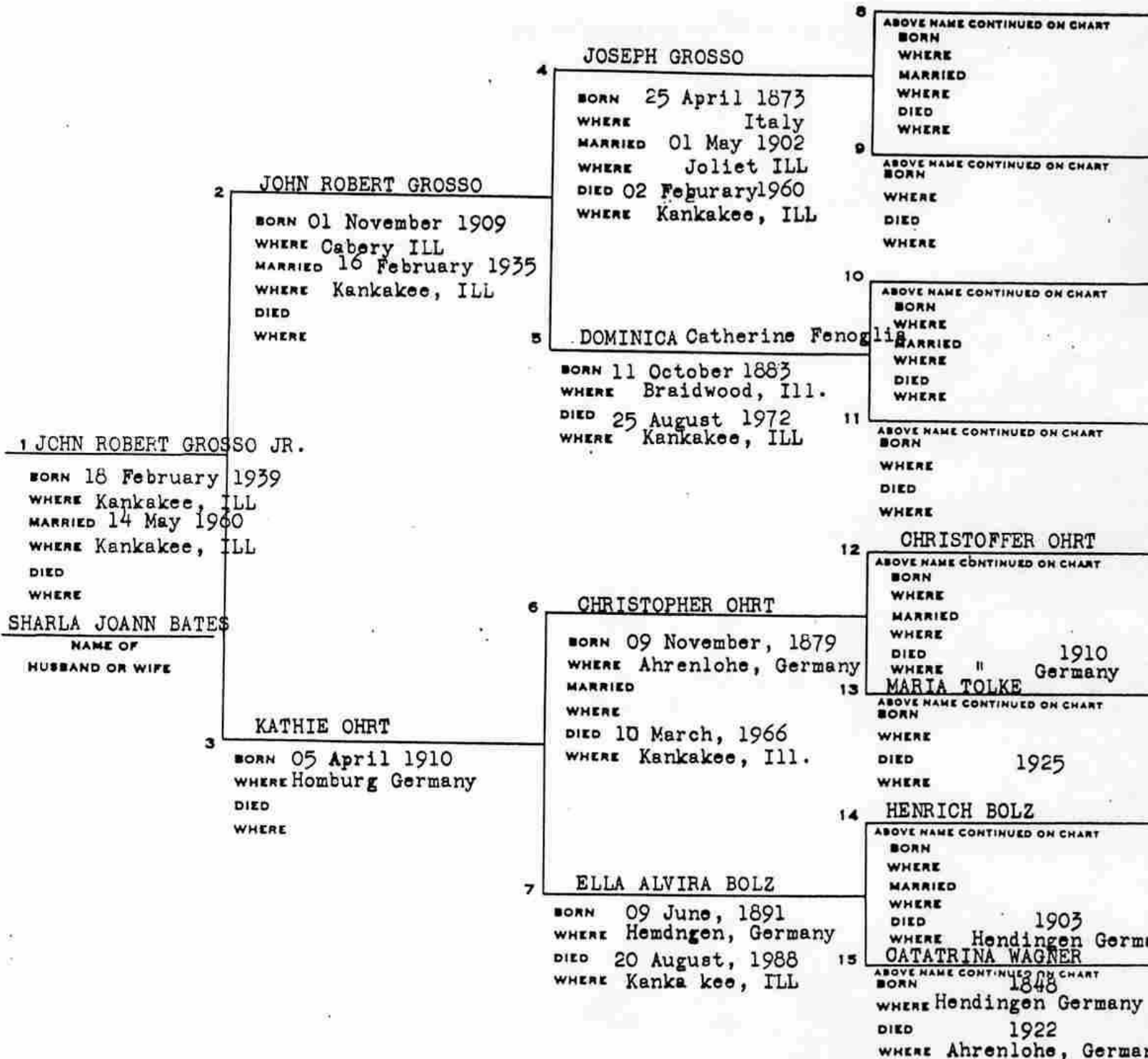
Compiler
 Sharla Bates Grosso
 4594-A W.Rte. 17
 Kankakee, Ill. 60901

PEDIGREE CHART

CHART NO. 01

NO. 1 ON THIS CHART IS
 THE SAME PERSON AS NO. _____

ON CHART NO. _____



SURNAME INDEX — VOLUME 22, NO. 3

Alexander	19	Etter	12
Astle	18	Fenouille	18
Bachand	13	Ferguson	16
Bachant	14	Filch	14
Baker	7, 16	Flannery	15
Bates	27, 28	Franklin	15
Bauermeister	13	Frith	13, 14
Beardsley	18	Gallagher	22
Beckman	18	Gathany	18
Belfiglio	15	Giasson	13
Berent	16	Girard	12
Berger	18	Glover	27
Bergguist	4	Godfrey	12
Bergman	5	Goepper	18
Berry	16	Graham	14
Besse	7	Gregolr	12
Blakesley	14	Gross	9
Blessing	13	Grosso	27, 28
Bolz	28	Guertin	13, 18
Bothfuhr	18	Hall	14
Brant	13	Harris	18
Brayton	13	Hartmann	7
Brayton	13, 14	Hawkins	13
Breault	18	Hennessy	18
Buck	12	Hertz	17
Buell	12	Hewes	7
Burton	12	Hodgson	16
Byrns	18	Hofmann	6
Cadieux	9	Holt	14
Cape	14	Hosier	18
Caron	13	Hutton	16
Chamberlaine	6	Japery	13
Chase	14	Jeffers	18
Cnacinski	16	Jones	12
Collier	18	Junker	13
Coutier	12	Kahney	18
Cox	13	Keigher	18
Cyrier	12, 14	Kendall	13, 14
Dandurand	12	Knecht	14
Danner	17	Kowkowski	13
Davis	12, 14	Kramer	13
Deerson	14	Kurtz	9
Deneau	12	L'Hommedieu	8
Devilling	14	Lambert	12
Dickson	14	Lamport	9
Dominica	28	Lane	13
Driscoll	12	Lapage	13
Duncan	12	Laumann	9
Dyer	18	Lecour	18
Easton	14	Lee	14
Elliott	9, 15	Leper	4
Elsbery	12	Lenoux	13
Enos	18	Londen	14
Ernferdt	13	Look	14

Surname Index (Contd.)

Looker	18	Sanesack/Senesac	7
Loselle	13	Sawyer	18
Lottinville	22	Scherrer	9
Lansford	7	Schneider	18
Lynch	12	Schram	14
Mann	19	Shambo	12
Marcotte	14, 18	Simpson	12
Martin	19	Skenk	13
Matine	27	Skinner	18
McBroom	18	Smith	9, 12, 16
McCay	15	Stangland	16
McGrew	12	Steesy	4
McKee	14	Steinbach	13
McWhorter	7	Stratton	13
Meinzer	9	Stravlow	14
Meitzler	4	Suess	15
Melby	14	Sylvester	18
Merrill	18	Tanner	22
Miller	13	Taylor	9
Mitchell	14, 15	Templeton	9
Mogg	14	Teverbaugh	7
Moncreiffe	16	Thompson	7
Neview	12	Thomsen	16
Nicholas	7	Thurber	14
O'Donnell	9	Tolke	28
Ohrt	28	Topping	18
Olds	14	Trowbridge	12
Ott	13, 14	Tschill	12
Pankow	13	Tupper	12
Parish	18	Veghten	13
Parker	18	Wagner	18, 28
Peters	13	Walter	17
Phillips	9	Watson	14
Picard	9	Wellauer	15, 16
Ponto	13	Wellborn	16
Porch	14	Whitehall	14
Powell	18	Whitehouse	13
Preece	15	Whouten	12
Preston	14	Withington	27
Putnam	14	Wust	15
Rahmanop	13	Wyatt	18
Reitz	9	Wyman	15
Rice	13	Zopf	12
Richard	14		
Riegel	17		
Robinson	18		
Ruel	18		
Roger	14		
Russell	14		
Ryan	15		
Ryskamp	15		
Sack	16		
Saltzgiver	18		
Sammis	12		

This index does not include
pages 23 through 26.